



MUCH ADO ABOUT STEWARDING

SHAKESPEARE'S GLOBE VOLUNTEER STEWARD NEWSLETTER

HAPPY 20TH BIRTHDAY

The official opening season was in 1997 – 20 years ago. As we are now in our 20th edition of *Much ADO About Stewarding*, it seemed an appropriate point to celebrate this huge milestone for the Globe. This article acknowledges the amazing wealth of stories, memories and contributions from Stewards who began volunteering right back between 1995 and the opening season in 1997. We hope you enjoy a walk down memory lane and a glimpse of what being a steward was like in the early years of the Globe.

Though we will soon be beginning a new season of work, do, like us, spend some time occasionally thinking about how lucky we are that there were volunteers before us who paved the way ensuring the Globe still stands as strong and successful as it is today.

*Matt, Lotty, Carly, Alysha, Lily, Peter,
Bob, Anna and Camilla*

'I have been stewarding at the Globe since the Workshop Season in 1995, but of course there were volunteers who stewarded for earlier productions in the shell of the theatre before it was completed. I remember being on duty for a gala occasion – must have been 1996 – when the named stones had been laid in the Piazza, and I was given custody of the newly-compiled index which showed where each stone could be found. A flamboyantly dapper older gentleman was ushered up by a member of the Globe staff, as he wanted to see his stone. "Of course," I said. "What name is it?" "Lord Montagu of Beaulieu" was the reply. I looked under "M" with no luck, and it was a similar story under "B". Nothing under "L" for Lord, either. I was just contemplating looking under "O", when he said helpfully "Perhaps it's under one of my other titles..." In 1996, Front of House wore evening dress. Those were the days!' *John Oakenfull*

'I have lots of lovely memories of my first season at the Globe (1996). *The Two Gentlemen of Verona* was on for about three weeks and although the theatre was up and running the site was incomplete. The area which is now the foyer was open cast concrete and we hired cushions out of a wheelbarrow. One of my most enduring memories was of two elegant ladies, up from the Shires, walking into the theatre, stopping in their tracks, looking around in amazement and saying "Oh my goodness, haven't they done it well. You can't see where they've joined the new bits up to the old bits." I managed to relay this to Peter McCurdy when I had the chance and it gave him such a laugh. George Innes, who was appearing in the play, fell and broke his leg on stage and one of the plasterers, Mel, who had been plastering away while rehearsals were going on, knew his lines and stepped in for him. Quite a moment of glory for him!' *Kath Rowe*

'I seem to remember we had about 90 volunteer stewards, the opening season. The season was a bit shorter then, but nevertheless it was still a lot of shows to cover in those early days. I would volunteer four or five shows a week, a big ask when you have a regular job also. My stewarding adventure began with the play that opened the season, the life of Henry V in 1997. It was all new to everyone involved and the likes of the Globe theatre space was not really known at all in terms of managing the movements of our patrons and ensuring the space was safe and met with health and safety requirements. So began my love affair with the Globe.'

David Risley



TEAM OF THE MONTH RETAIL

Hello Stewards,

I'm Meghan, and I oversee the Retail operation at the Globe. Our shop continues to be one of the best performing heritage gift shops in London. Last year over 163,000 of our visitors also took home souvenirs from our shelves.

This time of year is very busy for us as we source and develop new (and hopefully exciting) products for the *Summer of Love* season. We aim to be able to re-merchandise the shop by Easter to showcase these new ranges. At the moment one could liken the Retail department to a swan. Whilst on the shop floor, all appears calm and under control, behind the scenes it's all go! We are sourcing and sampling new products, negotiating the best prices with our suppliers and receiving bulk stock in at our warehouse – all ready for 22 April and the opening performance of *Romeo and Juliet*. On the way we have notebooks, mugs and even sticks of rock for the *Summer of Love* range, silk scarves for *King Lear* and leather journals and t-shirts for *Romeo and Juliet*.

This year has so far been fairly challenging for Retail. Although the vast majority of our finished souvenirs are produced in the UK, our suppliers source their blank product from all over Europe and the USA. The fall in the value of the Pound against the Euro and the Dollar has meant re-negotiating prices on virtually all of our products and having to absorb unexpected costs. A painful yet unavoidable process. On a more positive note, the value of the Pound in our overseas visitors' pockets has risen, meaning they are spending more than ever with us and the average spend per transaction has risen to record levels. It is well worth remembering that all the profits generated by the shop are returned to the Trust to help further the artistic and educational work of the Globe.

We continue to be proud that the majority of our products are designed in-house here at the Globe and are exclusive to our shop. I believe that we should be celebrating the (sometimes hidden) talents of the Globe staff wherever appropriate and this year we are showcasing hand-printed greetings cards, jute bags, mugs, prints and wonderful silver jewellery, all produced by Retail team members.

So do come along and have a look!

Meghan Cole
Head of Retail

DATES FOR YOUR DIARY

Read below to look at upcoming dates for your diary!

OTHELLO: CAPTIONED PERFORMANCE

Sam Wanamaker Playhouse
Wednesday 5 April, 7.30pm

OTHELLO: AUDIO DESCRIBED PERFORMANCE

Sam Wanamaker Playhouse
Sunday 9 April, 1.30pm

THE WHITE DEVIL: BSL INTERPRETED

Sam Wanamaker Playhouse
Monday 10 April, 7.30pm

PRE-SEASON DROP IN

Park Street
Monday 17 April, Time TBC

START OF SEASON PARTY

Park Street
Monday 17 April, Time TBC

OTHELLO: FINAL PERFORMANCE

Sam Wanamaker Playhouse
Saturday 22 April, 8.00pm

ROMEO AND JULIET OPENING NIGHT

Shakespeare's Globe Theatre
Saturday 22 April, 7.30pm

SHAKESPEARE'S SONNET WALKS

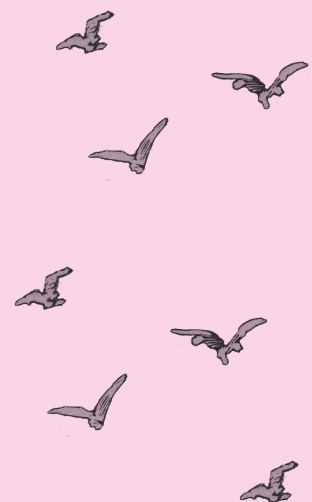
Off-site
Saturday 22 and Sunday 23 April, 11.00am

SHAKESPEARE WITHIN THE ABBEY

Westminster Abbey
Friday 21 and Saturday 22 April,
6.30pm and 8.15pm

NELL GWYNN: OPENING NIGHT

Shakespeare's Globe Theatre
Tuesday 2 May, 7.30pm



A NOTE FROM A FRIENDS DESK VOLUNTEER

Hello Stewards and Friends,

I'm Tony and I've had a lifelong interest in theatre and Shakespeare. I first got involved as a friend in the early 1990s when I started attending the "Out of a Hat" readings where you read a Shakespeare play and got a different part in each act. I stewarded the workshop and prologue seasons in 1995 and



Photo: Charlene Segeral

1996. I have attended many of the lectures, workshops and satellite events run by the education department over the years, and been a particular fan of *Read not Dead* since its inception. A couple of years ago I graduated to regular duties on the Friends' Desk where I do my best to answer any questions visitors throw at me, encourage people to become friends, help direct a lot of people to the exhibition, and the all-important thing... sell wristbands! All of which has stood me in excellent stead for another theatrical activity.

I am also a performed playwright, and at the end of April last year I produced a play about Shakespeare entitled *A Kingdom for a Stage* at the Chelsea Theatre. I wrote it with the four hundredth anniversary of the bard's death in mind, and it was done with a professional cast and crew. When it was over, I felt that I couldn't leave it there, so subsequently we made an audio recording of it.

This is now going to be broadcast on the spoken word 24/7 internet radio station audiobookradio.net in two parts to coincide with Shakespeare's four hundred and first anniversary. Act I will go out on Monday 17 April at 12 noon and 8.00pm and on Tuesday, 18 April at 4am and Act II will follow at the same times on Monday 24 and Tuesday 25 April. Repeats will probably be scheduled later. All you need to do to listen is go to the website and click on "Listen Now". I hope that some of you will.

See you at the Friends Desk!

Tony Diggle

TALES AROUND PLAY



I enjoyed the *Tales Around Play* at half term as I love to see children and their families all taking part together. I first stewarded these family events in the Playhouse last summer. I was lucky enough to be inside the theatre when Chris Riddell and Michael Morpurgo were talking about their lives and work. These events are aimed principally at primary school children and are a wonderful introduction to Shakespeare. A highlight was a relaxed performance when the headmistress of a local school brought all the children to the Globe by bus making it a great day out. This encouraged me to volunteer last Autumn half term for *Tales Around Play* and again at February half term. They comprise Storytelling and Workshop sessions each one hour long and running concurrently throughout the day in the Nancy Knowles and Watkins 1 and 2 studios. Lots of families sign up for both.

In the workshops, the practitioners think about a specific character or scene from the play. The children and adults might learn specific words or a line of text, what it means in relation to the story, and then act it out in pairs or small groups. In the story telling, the practitioner tells a shortened but dramatic version of the play with appropriate props. There is lots of interaction with the audience, often splitting them into sections to become different parts of a particular scene.

I volunteer in many different places, but the Globe and Playhouse remain unique.

Ann McKenzie

10 QUESTIONS WITH...



- 1 **Name**
Leonora Ellerby
- 2 **Favourite Stewards room biscuit?**
Shortbread fingers
- 3 **Coffee or Tea?**
Tea
- 4 **How long have you been volunteering at the Globe?**
This will be my fifth season
- 5 **Favourite Duty?**
Inside – in the Yard
Outside – on cushion carts
- 6 **If you could be any Shakespeare character who would you be and why?**
Richard III – such an evil character with some great lines
- 7 **Tell us a funny story from your time at the Globe:**
During the wrestling scene in *As You Like It*, a little boy started to walk on to the stage and when I stopped him he said, "But I need a closer look"
- 8 **What's your favourite thing about volunteering at the Globe?**
I really enjoy the *Playing Shakespeare with Deutsche Bank* season. I love seeing the young people coming to the theatre – some for the very first time.
- 9 **What drew you into volunteering at the Globe?**
I always enjoyed attending performances at the Globe and thought it would be fun to be involved once I retired.
- 10 **If you were on a desert Island, what disc, book and food would you take?**
Disc: Diana Ross: "I'm gonna make you love me"
Book: Probably *Middlemarch*. There is a lot of book to read.
Food: My mother's Cornish pasty

THY NOTICEBOARD

Doing something exciting you want to tell everybody about? Taking part in a fundraiser for charity or got tickets to a show you would like to share?

Let us know and we can pin it here:



THANK YOU FROM THE EDUCATION EVENTS TEAM!

Thank you for all your hard work and support on *Tales Around Play*. It was such a lovely week and you were all so welcoming to our family visitors. Saturday was particularly busy but you all worked so well together and we couldn't have done it without you.

We hope you enjoyed the biscuits
Education Events x



THANK YOU FROM THE HIGHER EDUCATION TEAM!

Thank you for your continued support of our Higher Education Scene programmes. It is an amazing experience for our students to be able to perform on the Globe stage and we can't do it without your generous support!

From Team Higher Ed!



The Globe in 1995

MORE 20TH BIRTHDAY STORIES

'The day after Princess Diana died in 1997, the theatre did not close but the play was changed from *Chaste Maid* because of the scene showing two lovers in coffins. *Henry V* was performed instead. Nobody complained.'

Brenda Moore



*From the archive.
Chaste Maid, 1997*

'In a drawer lies a t-shirt with rather faded *Festival of Firsts* design but it's still fine otherwise; these memories will be rather like that.'

Sue Robinson.

'In its year, 1995, the stage was not finished, the two pillars were plywood and square, and the upper gallery was not ready to receive an audience. The audiences were interesting though – many actors and actresses came to see what it was all about. After all, the Globe is unique.'

Irmgard Tonolo.

THANK YOU 1995–1997 TO 2017 STEWARDS!

Brenda Moore
Julie Patten
Davis Risley
Rob Thomson
Steve Lockett
Frances Allen
Sylvie Brasier
Kath Rowe
Philipa Hansen
Pat McSweeney
John Oakenfull
Sue Robinson
Irmgard Tonolo
Siri Fischer Hansen
Sylvia Chinoy
Jenny Templeton
Christine Quinn
Aleck Quinn
Anne Rowley

CONTACT US

Email: foh@shakespearesglobe.com

This is the only inbox monitored 7 days a week.

Call: 020 7902 1481

Feel free to leave a voicemail if nobody is able to pick up.

Text: 07503 984 933

Use this if you are running late and on the move!

In Person: On Playhouse shifts, or by appointment over the Winter Season!

Feedback, compliments or concerns:
Please feel free to contact:

Lotty: lotty.e@shakespearesglobe.com or

Matt: matt.h@shakespearesglobe.com
if you have anything to talk to us about specifically that is regarding something more sensitive.

SPECIAL THANKS FOR YOUR CONTRIBUTIONS TO...

Doug Buist, Charlotte Horobin, Lisa Kosky, Sophie Shears, Emma Hayes, Elspeth North, Leonora Ellerby, Tony Diggle, Ann McKenzie, Meghan Cole and our 1995–1997 starter Stewards!