



MUCH ADO ABOUT STEWARDING

SHAKESPEARE'S GLOBE VOLUNTEER STEWARD NEWSLETTER



FAREWELLS AND FIESTAS!

This month has seen us bid farewell to our wonderful Assistant Volunteer Manager Matt and welcome the vibrant Mexican fiesta of *Much Ado About Nothing* to the Globe stage!

Matt had a lovely send off, with a hat themed celebration which many stewards embraced with gusto. There were top hats, handmade hats, bowler hats, sparkly hats and even Matt-Hatt-hats made by the theatre team! Thanks to your generous contributions we were able to get him an i-pad to use in his new role with Imperial Health Charity, we had it engraved with a message from all of you: 'To Matt, with love from the Globe Stewards'. We were also able to get him theatre tokens so he can keep his love of theatre going once he is no longer here to see all of the wonderful Globe shows. He has been in touch to say that he is enjoying his new job but misses you all!

This month we said farewell to Daniel Cramer's *Romeo and Juliet*, and welcomed to the stage *Much Ado About Nothing*. This season's *Much Ado* is inspired by the Mexican revolution, with an ambitious set which features a train carriage with hidden hatches, a shrine, brightly coloured

flags and banners, and 1950s style American film crew! The music was composed by our resident music associate James Maloney. It's a visual feast with foot-thumping folk dance, actors on stilts, sombreros a plenty, and joyful South American inspired music.

Earlier this month our Artistic Director Emma Rice announced that her new company, Wise Children, will be company in residence at the Old Vic theatre for their 2018/19 season. Emma's company will be in residence for the Young Vic's bicentenary year, as they celebrate 200 years of independent, creatively adventurous theatre. We all wish her well with this exciting new project.

This edition of your volunteer newsletter features 10 questions with new steward Frances Higgs, Team of the Month with Anna from the Development team and Irmgard shares her experience at the Queen's Garden Party. Happy reading!

Lotty, Carly, Lily, Alysha, the Duty Managers, Bob and Anna.



Hello Stewards!

I'm Anna and I joined the Globe as the new Membership Manager in February. I look after the Friends and Patrons scheme, and work with Holly (Friends Coordinator) and Clare (Patrons Coordinator) to look after our supporters. I also work with Bob Barker (our wonderful Friends Volunteer), who looks after our amazing team of Friends Desk Volunteers. I've joined the Globe from the Royal Court Theatre, where I looked after the membership scheme over there. My day to day tasks vary, but my main focus is ensuring that our membership scheme continues to bring in the much needed resource and income that we need to operate. Our Friends and Patrons are hugely important to us, and the support we get from their involvement brings in vital funds as well as building a loyal base of members who are engaged with what we do.

This month has been quite busy as we've had a bit of change in the Friends and Patrons team – as well as being quite new myself, we've also had Holly and Clare join us (replacing Camilla and Marcel). We've also been communicating the news of the new Artistic Director appointment to our Friends and Patrons, and getting plans and ideas in place around this. I'm also ensuring that Holly and Clare learn from our brilliant Friends Desk Volunteers by experiencing some of the morning shift on the desk. Our Desk Volunteers play a vital role in managing Friend membership enquiries in the foyer, as well as taking daily donations (and fielding lots of other general sorts of questions such as how to get from A to B!).

I have been a Friend of the Globe myself for about five years, and I have been a huge fan of the theatre for some time. When the Sam Wanamaker Playhouse opened a few years ago, I fell in love with it – I definitely think it is the best theatre space in London! My favourite Globe production was probably 2013's *The Tempest* with Roger Allam as Prospero, while my favourite Playhouse production is definitely *The Knight of the Burning Pestle*... I think I ended up seeing it three times! As a long-term attendee of the Globe, I've always been impressed by the wonderful and friendly Stewards that have welcomed me into the theatre. I recently shadowed the team on a *Romeo & Juliet* matinee and experienced a shift for myself, and hope to do this again later in the year. It's a great way to learn at first hand the brilliant work our Stewards do to make sure our audiences get to enjoy our performances.

Anna Sampson
Membership Manager

DATES FOR YOUR DIARY

Read below to look at upcoming dates for your diary!

STEWARDS DROP-IN: OPEN TO ALL!

Theo's Café, Sackler Studios

Wednesday 2 August, 5.00pm – 6.00pm

KING LEAR: OPENING NIGHT

Shakespeare's Globe Theatre

Thursday 10 August, 7.30pm

STEWARDS DROP-IN: OPEN TO ALL!

Theo's Café, Sackler Studios

Wednesday 16 August, 5.00pm – 6.00pm

STEWARDS DROP-IN: OPEN TO ALL!

Theo's Café, Sackler Studios

Wednesday 30 August, 5.00pm – 6.00pm

FOCUS GROUP MEETING 4

Under Globe Meeting Room

Monday 4 September, 6.30pm

STEWARDS DROP-IN: OPEN TO ALL!

Theo's Café, Sackler Centre

Wednesday 13 September, 5.00pm – 6.00pm

BOUDICA: OPENING NIGHT

Shakespeare's Globe Theatre

Friday 8 September, 7.30pm

SAM WANAMAKER PLAYHOUSE TRAINING

Sam Wanamaker Playhouse

Various dates September – To be confirmed soon!



A TRIP TO BUCKINGHAM PALACE



It was a pleasant surprise for Sylvia and I to be offered a place at the Tea Party at Buckingham Palace. A few weeks later we also received a letter asking for details of our interests as The Duke of Edinburgh wanted to talk to us. Security was strict, but very friendly. Sylvia and I were the first to enter through Grosvenor Gate. It was a 10 minutes walk through the gardens and what a pleasant walk it was. We were met at the steps to the Palace by girl guides whose sole task it was to assist people up and down the stairs.

We went to the Bow Room where we met the equerries. Ten groups of four people were escorted by an equerry. We were group nine. Then we were told what to do or not to do. 'Don't offer your hand before the Duke has offered his.' If a man, bow from the neck, if a woman, curtsy. Then we were taken into the garden, in our order. People were lined up and we had to walk through the middle of this. Everybody was looking at us and wondering who we were.

Then we stood in our order and waited for the Duke. There was a one minute silence because of the Manchester attack. It was interesting to watch the people who were there and their attitudes. Some had to pull their high-heeled shoes out of the grass. All were friendly and talkative.

After the Duke had spoken to us we could go to the tea tent. So many people had got there before and some of the nice cakes were gone. But the waitresses were so kind and obliging.

We walked back through the garden to Grosvenor Gate. It had been a memorable afternoon.

A few weeks later Sylvia and I received a medal for 20+ years of stewarding. So many memories to treasure.

Thank you to Shakespeare's Globe. I look forward to many more years there. As long as you want me.

Irmgard, *Volunteer Steward*

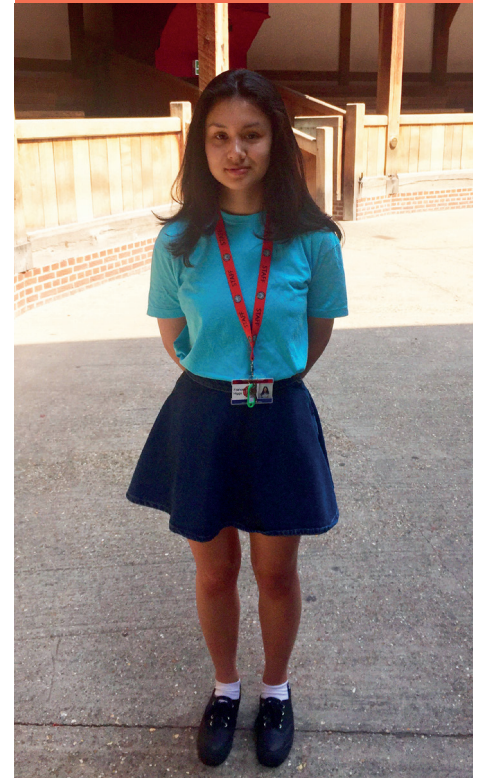
FOCUS GROUP UPDATE

To our fellow stewards, the focus group have been discussing Project Prospero in our meetings. Project Prospero will see the west side of the site (including the stewards' room, staff offices, library and archive and exhibition) rebuilt, with work expected to start next year. We want to ensure we put forward our views on the new stewards' room before building work starts. During the building work the stewards will be accommodated in a temporary location on site.

At the last focus group we discussed what we would need from the new room. We have listed these things [here](#). We will send our collated suggestions to CEO Neil Constable and Head of Visitor Experience Peter Cadley. We must emphasise that there is no guarantee we will get everything we ask for, but it's important for us to share our suggestions before building work starts. If you have any additional comments to add to this letter, please send them to foh@shakespearesglobe.com by Friday 11 August.



10 QUESTIONS WITH...



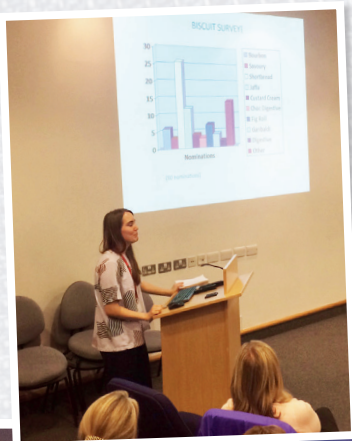
- 1 **Name**
Frances Higgs
- 2 **Favourite Stewards room biscuit?**
Any with jam in them
- 3 **Coffee or Tea?**
Coffee
- 4 **How long have you been volunteering at the Globe?**
I've just started this season
- 5 **Favourite Duty?**
Yard – everything happens there! And it's great fun to watch the actors interact with the Groundlings.
- 6 **Favourite Production?**
Probably the 2012 production of *Henry V* with Jamie Parker – it was the first time I saw, what was then my favourite Shakespeare play, at the theatre.
- 7 **If you could be any Shakespeare character, who would you be and why?**
Cleopatra – because she's Cleopatra...
- 8 **What's your favourite thing about volunteering at the Globe?**
I love seeing how excited people are by the performances, particularly those who weren't expecting to enjoy it as much as they did.
- 9 **What's Your Life Mantra?**
Reason not the need.
- 10 **If you were on a desert island, what disc, book and food would you take?**
Disc: Art Tatum and Ben Webster – *The Album*
Book: A facing-page edition of Ovid's *Metamorphoses*
Food: Bacon sandwiches!

THY NOTICEBOARD

Doing something exciting you want to tell everybody about? Taking part in a fundraiser for charity or got tickets to a show you would like to share? Let us know and we can pin it here:



Matt's Hat Party. THANK YOU to all of you who came along to Matt's leaving do, those of you who donated towards his leaving gift, and left lovely messages in his card!



July Communications Session – Lily presents her biscuit chart! Shortbread was a clear winner.



Steward Anna has several gigs coming up, full details at annaaarons.co.uk

CONTACT US

Email: foh@shakespearesglobe.com

This is the only inbox monitored 7 days a week.

Call: 020 7902 1531

Feel free to leave a voicemail if nobody is able to pick up.

Text: 07503 984 933

Use this if you are running late and on the move!

In Person: At our Drop in's at Theo's Café every other Wednesday throughout the Summer Season. Dates are listed in our Dates for the Diary section.

Feedback, compliments or concerns:

Please feel free to contact:

Lotty: lotty.e@shakespearesglobe.com

if you have anything to talk to us about specifically that is regarding something more sensitive.

SPECIAL THANKS FOR YOUR CONTRIBUTIONS TO...

Doug Buist, Anna Sampson, Irmgard Tonolo, Lisa Kosky, Sophie Shears, Frances Higgs