

ISSUE 46: December 2019

MUCH ADO

ABOUT VOLUNTEERING

SHAKESPEARE'S
GLOBE

Volunteer
Newsletter

HELLO AND WELCOME TO YOUR DECEMBER EDITION OF MUCH ADO ABOUT VOLUNTEERING

The Christmas trees are on site! *Christmas, at the (Snow) Globe* has just started rehearsals and our all-important volunteer advent calendar is in the Stewards' Room, which can only mean one thing!

We are well and truly into the Christmas spirit. Last month we were delighted to be joined by writer Jen Toksvig, who held a very merry knitting circle in the Stewards' Room. Volunteers came to together and nibbled on mince pies and knitted items which will be used as part of our very special Christmas production. Thank you to all of you who have signed up to steward as part of this production which offers to spread good will and cheer all around! We still have spaces available on several performances so would love your help in this festive event.

Last week we were lucky to be joined by Jen again along with Sandi Toksvig and Natasha, our Head of Visitor Experience, who were our esteemed judges for our Winter Warmer Bake Off. After sampling 15 festively themed bakes, Susan Searing was crowned our Bake Off Queen with her beautiful 'Danish Hamlet' Cake (pictured on Thy Noticeboard). Congratulations also to our runners up: Megan Johnston's beautiful Christmas carrot cake and Alistair Wilson's starry



cake. Fun was had by all with mulled wine, mince pies and a crafting session to decorate the stewards' Christmas tree, with no shortage of glittery and sequins.

Thank you to those of you who donated gifts for our third year taking part in the Better Bankside Together at Christmas appeal. Our collection boxes were completely overflowing due to your generosity and we received more items than ever before. Volunteers joined us for our Christmas Wrapping day and had created mountains of wrapped and labelled parcels in no time (all with Christmas tunes in the background of course!). The gifts have been collected by Better Bankside and will be distributed to hostels, sheltered accommodation units and community organisation units across Southwark.

As well as call our Christmas festivities we are delighted to be receiving applications for our new volunteers. Please help us by spreading the word to any eager friends or family members who would like to join the Globe family. To apply they will need to visit our website shakespearesglobe.com/volunteer and complete this by Monday 13 January 2020.

The 2019 Feedback Survey has been sent out. We're always looking to provide the best volunteering experience possible so this is your chance to share your thoughts on last season and any ideas you have. We will use this information to help us plan the 2020 season. Complete the survey by 30 December to be in with a chance of winning an Afternoon Tea in the Swan!

We hope very much to see you here over the Christmas period. If you are not joining us between now and 2020, we wish you a happy and healthy Christmas and New Year and look forward to seeing you in our next decade!

Best Wishes,

Kate, Rosie, Jenny, Carly, Nic, Natasha,
and the Visitor Welcome Managers



Team of the Month

RETAIL

For the past year Meghan, Head of Retail Management, has been assessing ways in which the Globe shop can trade in a more environmentally sustainable way. Meghan shares the process which she has made.

The Globe Shop sells around 700 different products. There are environmental impacts all along a product's life; from the natural resources that a product is made from, the water and energy used in production, potential pollution, transportation, and finally disposal. I have made changes to around a quarter of our products but I'm going to highlight just a few for you here.

Swords

We used to sell plastic crowns and daggers, all of which came individually bagged in more plastic and were shipped from Taiwan or China. We now source beautifully made swords, shields and flower crowns from a small company in Bavaria, South Germany. Not only is the quality and build better, meaning that the product will be used once bought for longer, the products are made using traditional methods in a workshop situated in the forest the wood is taken from. The company have been managing the forest for seventy years and re-plant two trees for every one they use in production. By buying from a company subject to EU regulations rather than China, we can also be sure that environmental standards relating to product and waste disposal have been followed.

T-shirts

Our t-shirts used to be sold individually bagged in printed plastic bags. T-shirts now arrive unbagged and we display them, instead, on wooden hangers. Since we've made this simple change sales have increased by almost 20%.

The environmental impact of printing our clothing and bags is another

consideration, as print dyes can be very damaging to water courses. Our supplier is very aware of this and has recently been awarded an organic printing certification from the Soil Association.

Keyrings and Pin Badges

I have worked with suppliers to remove single-use plastic packaging from just about all our products. Keyrings used to arrive individually bagged (one used to come wrapped in bubble wrap and individually boxed). After some occasionally frustrating negotiations they now come in unpacked. I've had to repeatedly explain to incredulous manufacturers that I really don't want everything individually wrapped in plastic, I've had to sign disclaimers saying I won't complain that things aren't wrapped in plastic. The plastic added nothing for the customer and actually cost us around 25p per unit.

Pencils

Our pencils are now made from recycled plastics in the UK.

Cards

Our greetings cards (and prints) are now wrapped in corn-starch packaging which is completely bio-degradable (you can add it to your kitchen waste bin). By being creative with print methods I have been able to produce three products (Postcards, bookmarks and notepads) from one print process, saving energy and making less waste.

Ponchos

Our rain ponchos are now biodegradable, meaning the ecological impact is minimised and, once disposed of, the poncho will break down and degrade within a few months (hopefully not while you are wearing it).

Carrier bags

These are photo-degradable plastic, which means they begin to break down once exposed to sunlight. This is obviously better than standard plastics but there are definitely still improvements to make here. As most discarded plastic ends up buried in landfill, and no light means no breaking down. I am considering the merits of moving to paper carriers.

Till receipts cannot be recycled, they have a thermal coating which means they do not degrade or burn. We are now using till rolls produced by a company who replant trees in the Caledonian forests for each tree they use.

We use 50% recycled packaging for our web orders. The shop has hundreds of cardboard boxes delivered each month, along with large amounts of packaging peanuts. Why not reuse it instead of throwing it away?

Along with the shop, we are looking at ways in which we can ensure that we as a Volunteer

Team can become environmentally sustainable.



Enjoy a group visit discount to the Globe!

Our friends in the Group Bookings Team have arranged an exclusive deal for Volunteers!

Do you remember your first magical visit to The Globe? I am sure for all of us it was a very inspiring and memorable trip that has led us to return here time and again to work, volunteer or see a show! **With 10% off this festive period, when you quote discount code WIN19**, why not give a loved one the opportunity to discover our magical and beautiful theatre for themselves with our Globe Gift Experience! Vouchers are available from our online shop, and are valid for 6 months, allowing recipients plenty of time to book their visit once the hustle and bustle of Christmas has faded. Their day will begin with a fascinating tour of the Globe, vividly recreating colourful stories of the 1599 Playhouse, the London Shakespeare would have known and the Globe reconstruction process. Our guides will bring the theatre to life, exploring how the 'wooden O' works today as an imaginative and experimental space for performance. Your guests will then have the opportunity to relax and enjoy a delicious A Midsummer Night's Dream Afternoon Tea. The tea will include an array of sweet and



savoury delights, inspired by scenes from the play. The menu features apricots, which Titania feeds to Bottom when she is cast under the potion's spell; and mulberries, the tree under which Pyramus and Thisbe agree to meet in the play within a play. It is the perfect day out for Shakespeare lovers and novices alike, and is a wonderful way to share the place you love with the people you love this Christmas! This offer is valid for purchases made before 25 December 2019. Finally, we would like to wish you all a very merry Christmas and a happy new year!

The Trade and Group Sales Team

? 10 QUESTIONS with... Sarah Foster

1 Name
Sarah Foster

2 Tea or coffee?
I have not yet mastered the art of drinking a cup of tea in 15 minutes, so currently stick to cold drinks in the stewards' room, but normally I am always a tea drinker.

3 What drew you into volunteering at the Globe?
I actually worked at the Globe from 2010 until 2015 in the Development office. I told everyone that I was definitely going to come back as a steward, and no one believed me! But I missed the spirit of the place so much, and after a short break applied to become a steward in 2018. I've definitely had a few double takes from members of staff when they see me in my apron stewarding a performance!

4 Favourite Steward's room biscuits?
Custard creams, but I'm normally not fussy when it comes to biscuits.

5 Favourite duty?
I always like the fast paced atmosphere of the cushion cart, especially if after you are breaking for an indoor steward – best of both worlds!

6 What has been your favourite production?
Taming of the Shrew in 2012 with Samantha Spiro – I must have seen

that show six or seven times and every time the reaction from the audience to the Christopher Sly section that started the play was amazing.

7 If you could be any Shakespeare character who would you be and why?
Beatrice from *Much Ado About Nothing*, as she's strong, funny and loyal.

8 Tell us a funny story from your time at the Globe:
During this season's production of *The Merry Wives of Windsor* a patron asked me if she thought she was standing in the best place, and if I would recommend moving to the other side of the stage. I told her that no, she should definitely stay where she was, but that I couldn't tell her why. As Falstaff spat his beer into the audience just where she was thinking of moving to she turned to me and mouthed 'thank you'.

9 What's your life mantra?
Always be kind.

10 If you could pass one tip onto other volunteers, what would it be?
Have fun. (And always remember to check that people aren't paying for their cushion hire with old pounds coins!)



Sandra bids us a fond farewell

Our brilliant Director of Visitor Experience is leaving the Globe in March.

Dear All,

I will be leaving the Globe in March, after six and a half wonderful years, to take up the position of Director of Visitor Engagement at St. Paul's Cathedral.

I shall take with me many memories of working with you all. There have been good times and tough times, but through everything you have been constant, a team we know that we can rely on and will do everything in their power to ensure the show goes on.

It has been a privilege to work with such a dedicated and passionate group of people. The Steward Volunteers are a wonderful team who enable the Globe to fulfil its mission every year. Sam would be so proud of you all.

Thank you for your support, your encouragement, your guidance and your unwavering loyalty. I'm sure I will see you as an audience member sometime soon.

With much love

Sandra

The actors and choir in the show are to be dressed in an array of knitted wear and, in a homely touch, it was decided that some of these items should be handknitted at a specially arranged Knitting Circle.

Upon arrival at the Stewards' room on the allotted day for the knitting circle, it was already a hive of activity. The table was laden with an array of multi-coloured yarns, knitting needles, crochet hooks and mince pies and Christmas songs filled the air. Knitters were gathered around the table and squeezed onto the chairs and a pile of bobble hats, mitts, scarves and granny squares was steadily growing, fuelled by Jen's generous supply of minced pies.

The knitters ranged from absolute beginners (Hello, Ben!) to the vastly experienced who were able to turn out hats or mittens in what seemed like minutes and even included an appearance from a very cute dog

whose lack of opposable thumbs proved an obstacle to knitting. Sitting near the bookcase with a bag of crocheted decorations was Caroline of the Snowflakes, named by Jen for her relentless ability to produce a beautiful white snowflake in a mere thirteen minutes. These snowflakes, and other hand-crafted decorations will be part of the show, to be distributed to members of the audience.

The hour seemed to rush by, such was the sense of industry and community. Knits were produced in tinsel wool, festive reds and greens, rich berry shades, starry yellows and snow whites, the colour palette we will see in the show. It is usually costume designers and professional seamstresses who experience the pride of seeing their creations on the stage of a world famous theatre, what a thrill it will be to see our actors adorned in our hand-crafted creations.

Jen's Knitting Circle

Volunteer Helen Mears tells us about what it was like to be part of the *Christmas at the (Snow) Globe* knitting circle.

When Jen Toksvig, co-creator and director of *Christmas at the (Snow) Globe*, sent out a call to arms for knitters among the stewarding community, the response was as generous as we've come to expect.



Dates for your Diary...

December & January

Read below for all your must-have dates for the month ahead:

December

Mon
16

Sam Wanamaker Playhouse January and February 2 shifts per month lifted

Monday 16 December 11.00am

Wed
19

Christmas at the (Snow) Globe

GLOBE THEATRE

Wednesday 19 December – Monday 23 December

Tue
24

Site Closed

GLOBE

Tuesday 24 December – Thursday 26 December

Dates and times of audio described, signed, captioned and relaxed performances are shown with the following icons:

AD

BSL

CAP

R

January

Sun
5

Richard III Touch Tour and

AD

SAM WANAMAKER PLAYHOUSE

Sunday 5 January, 11.00am

Mon
6

Playing Shakespeare Shift Release

GLOBE THEATRE

Monday 6 January

Tue
7

Henry VI

CAP

SAM WANAMAKER PLAYHOUSE

Tuesday 7 January, 6.30pm

Thu
9

Volunteer Drop in Session

CROSBY & HOPE

Thursday 9 January, 5.00pm

Thu
9

Swive

CAP

SAM WANAMAKER PLAYHOUSE

Thursday 9 January, 6.30pm

Thu
13

Volunteer Recruitment Deadline

Thursday 13 January, 5.00pm

Thu
16

Richard III

R

SAM WANAMAKER PLAYHOUSE

Thursday 16 January, 6.30pm

Wed
22

Henry VI Touch Tour and

AD

SAM WANAMAKER PLAYHOUSE

Wednesday 22 January

Sun
26

Henry VI

CAP

SAM WANAMAKER PLAYHOUSE

Sunday 26 January, 12.00pm

Sun
26

Richard III

CAP

SAM WANAMAKER PLAYHOUSE

Sunday 26 January, 5.30pm



QUIZMAS

This Christmas Crossword is cracking but, crucially, not cryptic. It is devilishly difficult at the request of one or two puzzle masters... but can they get inside the head of rookie enigmatologist Ben Price? Use your knowledge of Stewarding, Shakespeare and Christmas to have a go at this head scratcher.



down

- 1 - Used to conceal the surprise (8,5)
- 4 - A symptom of the green eyed monster (5)
- 6 - A problem play, set in the cold (7,4)
- 7 - Tune to channel T to hear the action (6)
- 9 - Give it a shake this December (4,5)
- 11 - Mary's steed (6)
- 12 - Shakespeare's rival (7)
- 14 - Home of the pennystinkers (4)
- 17 - Christmas in France (4)
- 18 - Once known as the Willows (8)
- 20 - Profession of a John who lost his head! (7)
- 22 - Home of the Toneelgroep repertory group (9)
- 23 - Our stone floor adorned with donors (6)
- 25 - Shakespeare's clown for the epiphany (5)
- 27 - To echo the bard's words (5)
- 28 - The pagan hunt (4)
- 30 - Lover of Olivia, muse of Viola (6)
- 32 - Performed most recently by Sarah Amankwah (5,1)

across

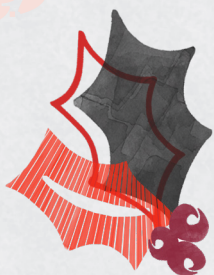
- 2 - Iambic pentameter and christmas carols will often...(5)
- 3 - A building with the name sake of our founder (9)
- 5 - Where the merry wives play! (7)
- 6 - Red logo made from Oak (6,1)
- 8 - Spirit of harvest (5)
- 10 - This Innkeeper would be happier if Mary rode a horse! (6)
- 13 - A popular festive starter (6)
- 15 - Position for program selling (3)
- 16 - Where the low people filter in (10,5)
- 19 - A Battersea school who borrow Christ's name (7)
- 24 - Santa eats cookies, stewards eat... (8)
- 25 - Expression of surprise, governors of fencing! (3)
- 26 - Alcoholic treat, perhaps based in Irish Cream! (7)
- 29 - Kind Duke of Bohemia (5, 10)
- 31 - He lacks the spirit of Christmas! (8)

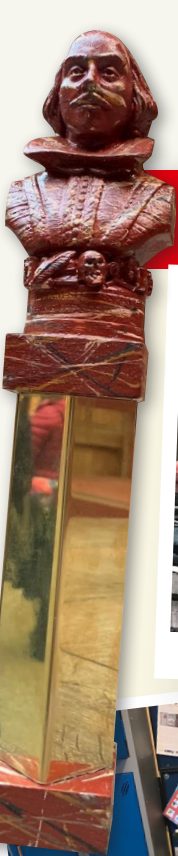
Alternatively, how many new words can you find in the word:

C H R I S T M A S

Please send a photo of a completed cross word to:
foh@shakespearesglobe.com
 to be in with a chance of winning a special prize!

Good Luck!





THY NOTICEBOARD



Doing something exciting you want to tell everybody about? Taking part in a fundraiser for charity or got tickets to a show you would like to share? Let us know and we can pin it here...



Concert for Winter saw a performance of several of our volunteers. See if you can spot one here!



Candles which are too short for burning in the Sam Wanamaker Playhouse are now available for you to take in the Stewards' Room.



A look at the many many parcels we created as a result of your generosity in giving gifts for the Together at Christmas Appeal.



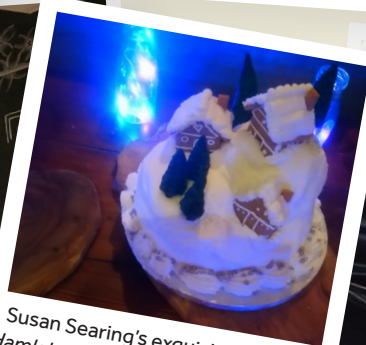
Our Taster Afternoon proved very successful with potential volunteers. Thank you to all the stewards who helped us welcome in the foyer, deliver tours in the Globe and give short talks on the wonders of volunteering.



Keeping warm in Concert For Winter thanks to the 2019 Summer Season Gift.



Our Bake Off Host!



Susan Searing's exquisite A Danish Hamlet won the hearts of our judges.



Our 2019 Focus Group enjoyed dressing up and getting into character on a visit to the Royal Mews.

CONTACT US...

Email: foh@shakespearesglobe.com

This is the only inbox monitored 7 days a week.

Call: **020 7902 1531**

(Feel free to leave a voicemail if nobody is able to pick up)

Text: **07503 984 933**

(Use this if you are running late and on the move!)

In Person: **At our monthly drop-in's at Crosby**

& Hope Café throughout the Summer Season.

Dates are listed in our Dates for the Diary section.

Feedback, Compliments or Concerns:

Please feel free to contact Rosie on

rosie.l@shakespearesglobe.com or Kate on

kate.hi@shakespearesglobe.com if you have

anything to talk to us about specifically that is

regarding something more sensitive.

Special Thanks

for your contributions to...

Meghan Cole

Sarah Foster

Helen Mears

Claire Reeves

Scott Harvey

Ben Price

Sandra Lynes-Timbrell