



**SHAKESPEARE'S  
GLOBE**

# **THE TWO NOBLE KINSMEN**

## **Visual Story**

To help prepare you for your  
visit to Shakespeare's Globe

**Relaxed Performance**

Saturday 16 June, 2.00pm





This is the stage, showing the set of *The Two Noble Kinsmen*. For different plays, designers add pieces of set to make it look different.

Stewards in red aprons will be able to help you find your seat and if you have any questions. If you feel tired, or need to exit please ask a steward. They can also show you where the toilets are.

Stewards are good people to go to if you feel worried about anything in the show.

# Show Notes

These are notes of things that may happen during the show, or that you may want to think about for the play.

## Timings

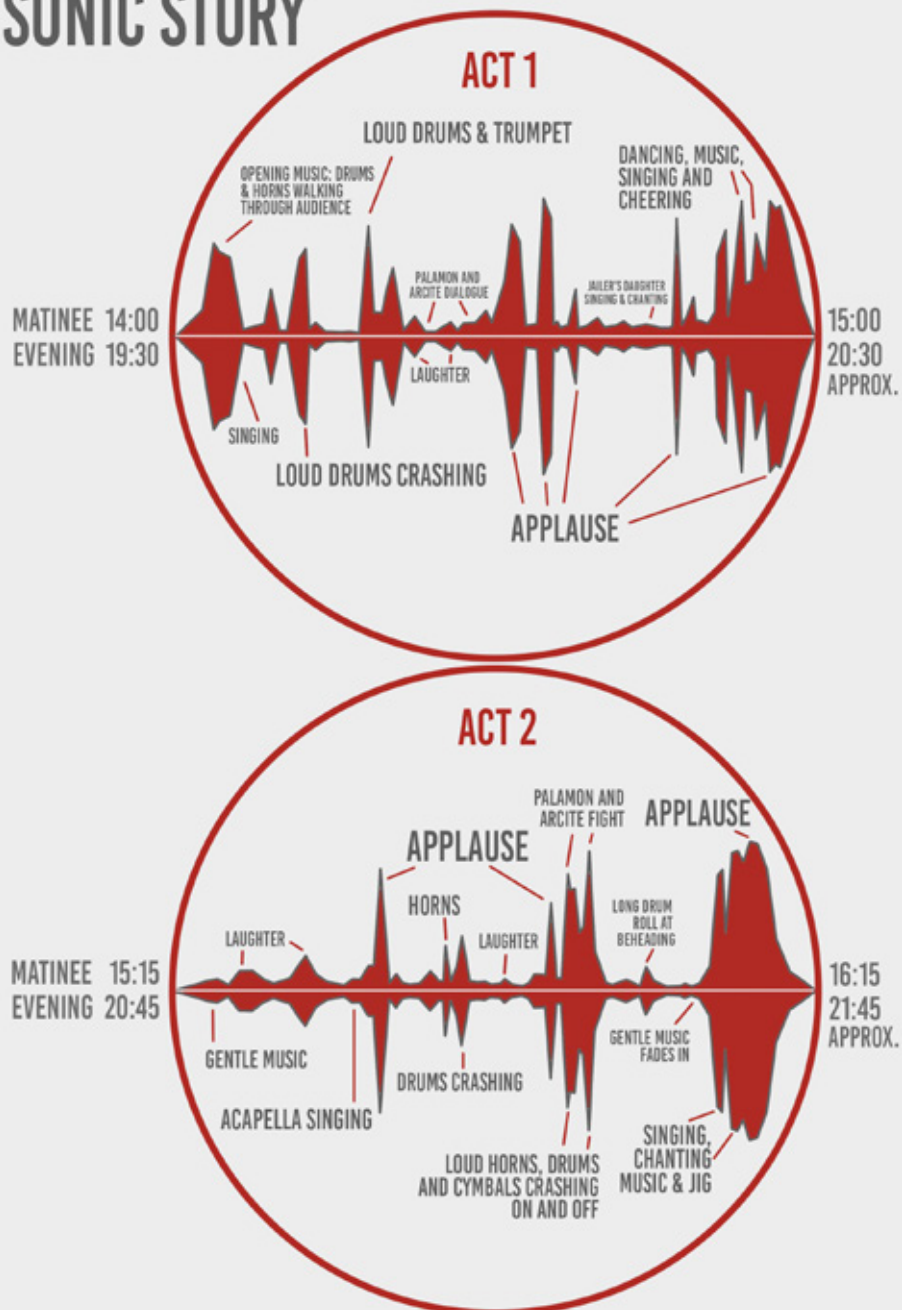
**Act 1** 1 hour 5 Minutes      **Interval** 15 minutes

**Act 2** 55 minutes      **TOTAL** 2 hours 15 minutes

- The music can be loud.
- There is especially loud drumming from the stage.
- The Morris dancing can be loud. The actors will hit their sticks against each others' sticks and the stage.
- Actors occasionally wear masks to disguise themselves.

# THE TWO NOBLE KINSMEN

## SONIC STORY



This graphic tells the 'sonic story' of The Two Noble Kinsman and highlights the loud and quiet elements of the performance



## **First Half**

- At the top of the show, a procession of actors & musicians come into the Yard through Door 2. They go onto the stage singing.
- The queens make an ululation, which is a sound from their throats.
- Also at the top of the show, actors enter the Yard through Door 3.
- 55 minutes into the show, two actors sit on the central steps and another two on the ledge of the stage by the pillars to watch the Morris Dance.

## **Second Half**

- 2 minutes into the second half, the actors fight with spears. This is play fighting, and no one will be harmed.
- 4 minutes into the second half, a Musician plays a trumpet from Door 2. This can be quite surprising. After this, four actors enter the Yard.
- 22 minutes into the second half, two actors enter via Door 2 and another two via Door 3 carrying prop animal stands through the Yard.
- About 28 minutes into the second half, there is loud banging with sticks whilst actors wrestle. This is play fighting, and no one will be harmed.
- The show finishes with a song followed by a jig.

## **The Sam Wanamaker Award**

After the play, there will be a presentation from the stage.

Staff members will come on stage to present the Sam Wanamaker Award, which is a prize for someone who has done good work based on Shakespeare. You are very welcome to remain in the theatre for the presentation.

# The Play

Theseus has married Hippolyta.



**This is Theseus**

Three queens arrive at Theseus's court.  
They beg him to go to war against Creon.



**These are the Queens**



This is Hippolyta

Hippolyta and Emilia agree with the queens. They also beg with Theseus.

He agrees to go and fight Creon.

Palamon and Arcite are from Thebes. They help defend their city but are captured. They are brought to Athens and locked away.

Their jailer has a daughter. She falls in love with Palamon. Another man loves the jailer's daughter, but she ignores him.



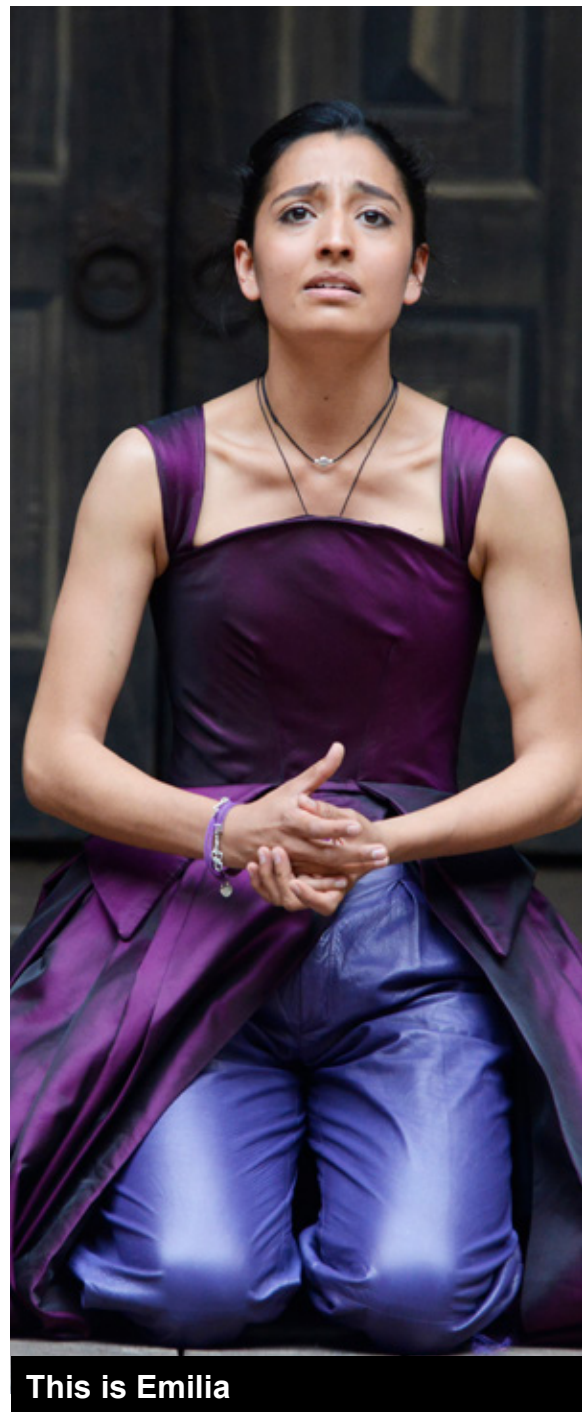
This is the jailer's daughter

Palamon and Arcite agree to stay true friends for their whole lives.

Palamon sees Emilia from the window of his prison. He falls in love with her. When Arcite sees Emilia, he falls in love with her too.

Theseus releases Arcite from prison, but banishes him.

Arcite meets some people in the countryside, and pretends to be one of them so that he may return to the city and see Emilia once more. Theseus does not recognise him, and makes him Emilia's servant.



**This is Emilia**



The Jailer's daughter gets Palamon out of jail. He runs away from her, but she follows. However, the sad fact that he doesn't love her makes her unwell. She becomes included in a dance put on for Theseus and Hippolyta.



**This is the lover**



**This is the jailer**

Palamon hides. He later sees Arcite and reveals himself. Arcite helps his friend by bringing him food. Because they both love Emilia they fight each other. Theseus finds them and they explain everything to him. Theseus tells them that they will fight and whoever wins the fight will be married to Emilia.

The Jailer and his friends despair over his daughter's madness. They consult a doctor, who advises that the daughter's wooer should pretend to be Palamon. She accepts the substitution, and they go off to be married.

Palamon and Arcite fight. Arcite wins and Palamon is sent to be executed. However, Arcite is thrown from his horse and is injured before he reaches Emilia. Arcite is brought to see Emilia, and before he dies he says that she should marry Palamon.



**This is Palamon and Arcite**