



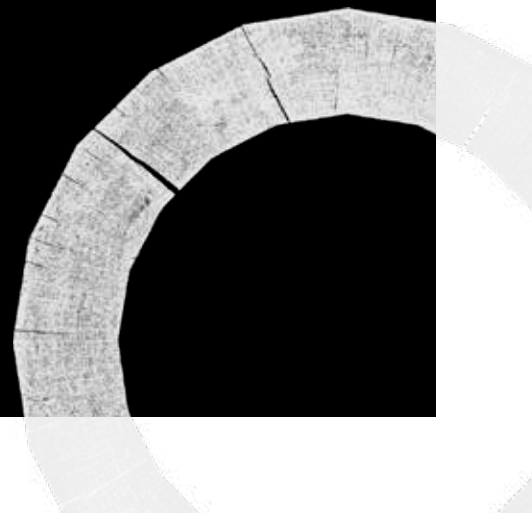
Easy Read

A Visual Story

To support your visit to Shakespeare's Globe.

SHAKESPEARE'S  
GLOBE

# KING LEAR



# The Cast



**Gabriel  
Akuwudike**  
KENT



**Ryan Donaldson**  
EDMUND



**Emma Ernest**  
FRANCE /  
GENTLEMAN



**Cory Hippolyte**  
LEAR'S KNIGHT /  
GLOUCESTER'S  
SERVANT / HERALD



**Kathryn Hunter**  
KING LEAR



**Mark Jax**  
CORNWALL



**Max Keeble**  
BURGUNDY/  
OSWALD



**Diego  
Matamoros**  
GLOUCESTER



**Kwaku Mills**  
EDGAR



**Ann Ogbomo**  
GONERIL / CURAN



**Marianne  
Oldham**  
REGAN



**Glyn Pritchard**  
ALBANY / OLD MAN



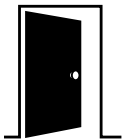
**Michelle Terry**  
CORDELIA / LEAR'S

# Show Notes



## Relaxed Performance

A relaxed performance will take place on Saturday 16 July at 2pm



### This will mean:

- There will be an open-door policy so that you can come and go.
- There are ear defenders available in different sizes to borrow from the Welcome Desk in the main foyer.
- We have worked with our creative team to reduce loud and sudden noises and other sensory elements.
- Some areas of the audience will have reduced capacity.



There will be a Quiet Space available. Please ask our team to show you where it is.

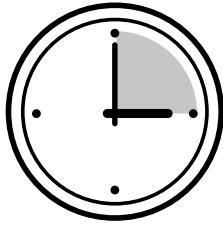


## Content and Trigger Warnings

The production includes:

- Sexual references
- Loud noises
- Small audience interaction
- Smoke/haze
- Use of prop guns
- Stage blood and gore
- Use of balaclavas

# Show Notes



## Times

The show is approximately 3 hours and 10 minutes, including an interval.



---

## Music and sound

Check out our sonic story for full information.

Throughout the performance there are:

- Loud noises
- Shooting a rifle
- Trumpets in the middle gallery
- Slamming open of the trap door

Please note that these will be cut or reduced in the Relaxed Performance.

---

## Lighting

The lighting is the same throughout.

In the matinee the show is lit by daylight.

# The Story



## Set

The background for the first scene is a curtain with a perfect image of the façade printed on it.

The curtain is pulled back to reveal large scaffolding structures and grey fabric.

It looks destroyed. It is a contrast to the perfect image on the curtain.

There is a wooden forestage which extends into the audience.



## Costume

The cast are wearing costumes from the Tudor period, including long cloaks and bonnets.

Musicians play at the beginning wearing regal red.

King Lear is wearing a simple black outfit and crown. As he descends into madness, his crown becomes ragged, sharp and made of wire.



Cordelia is wearing white, Goneril is wearing black with a red sash and Regan is wearing a crimson and grey dress.



The Fool and the disguised characters – 'Poor Tom' and Caius – wear street clothes and rags.

Lear's crown is made of twigs instead of wire.

# The Story



King Lear is a widow and nearing the end of his life. He announces that his kingdom will be divided between his 3 daughters, Goneril, Regan and Cordelia, and their husbands.

Before dividing his kingdom, King Lear asks his daughters to prove which of them loves him best. Goneril and Regan, the eldest daughters, make passionate speeches about their love for him. Cordelia, the youngest daughter, is horrified by the exercise, and refuses to say anything.



King Lear banishes Cordelia forever and divides his kingdom between Goneril and Regan, and their husbands.



Cordelia leaves with her husband-to-be, the King of France.

King Lear's most faithful servant, the Earl of Kent, challenges his behaviour. The Earl of Kent is banished, but later returns in disguise to serve his old master in secret, calling himself Caius.



Meanwhile, the Earl of Gloucester is tricked by his son, Edmund, into thinking that his other son, Edgar, is planning to murder him.

Edgar runs away and disguises himself as a beggar called 'Poor Tom'

# The Story



Goneril and Regan tell their father he is not welcome to stay with them. King Lear realises that his relationship with his two eldest daughters has been ruined. He is cast out in a storm with only his Fool and the disguised Earl of Kent for company.

King Lear begins to slide into a state of madness. The Earl of Gloucester's support for King Lear angers Goneril and Regan. He too is cast out as a traitor.



Lear and Gloucester's hopes lie with Cordelia, who has returned to England in charge of a French army.

Regan and her husband the Duke of Cornwall seek out the Earl of Gloucester. They tie him up, gouge out his eyes and murder his servant.



Gloucester encounters 'Poor Tom' who takes care of him and keeps him alive, although he doesn't realise it is in fact his own son, Edgar.

Goneril and Regan compete for Edmund's love. Goneril learns that the Duke of Cornwall (Regan's husband) has been killed by his servant.

Goneril thinks that Regan intends now to marry Edmund, so Goneril poisons her and plots to kill her own husband.

Cordelia and Lear are reunited and their relationship is reconciled.

# The Story



Cordelia's army is defeated by her sister's army.

Cordelia and Lear are imprisoned by Edmund, who plans for Cordelia to be hanged.

Edgar, still in disguise, accuses Edmund of treachery and challenges him to a duel. He is fatally wounded.



Goneril kills herself and Regan dies of the poison.

As Edmund is dying, he sends a message to save Cordelia's life. Tragically, the message arrives too late.

Lear enters with Cordelia's dead body.

Lear mourns Cordelia's death. He dies of heartbreak.

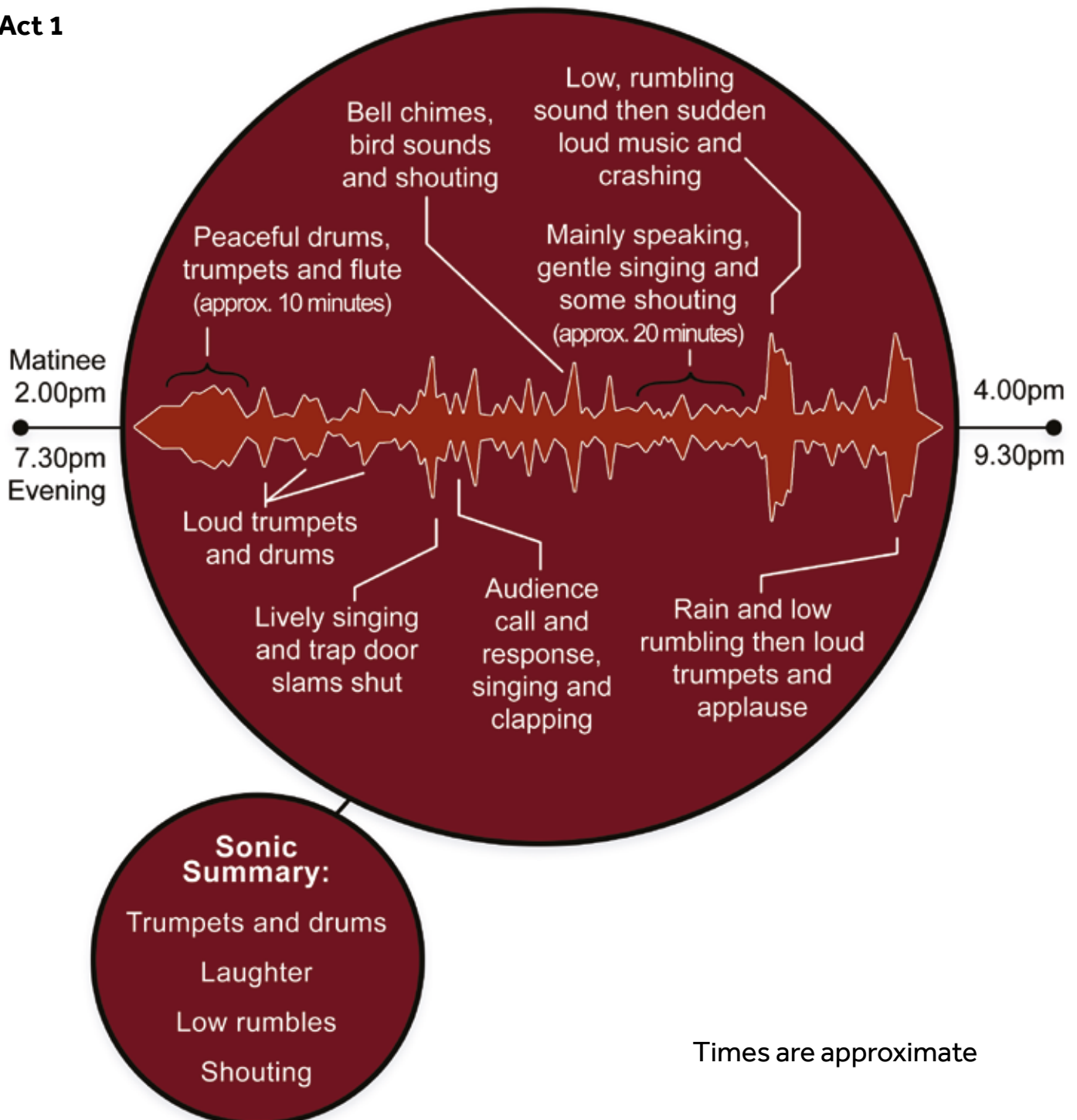


# Sonic Story

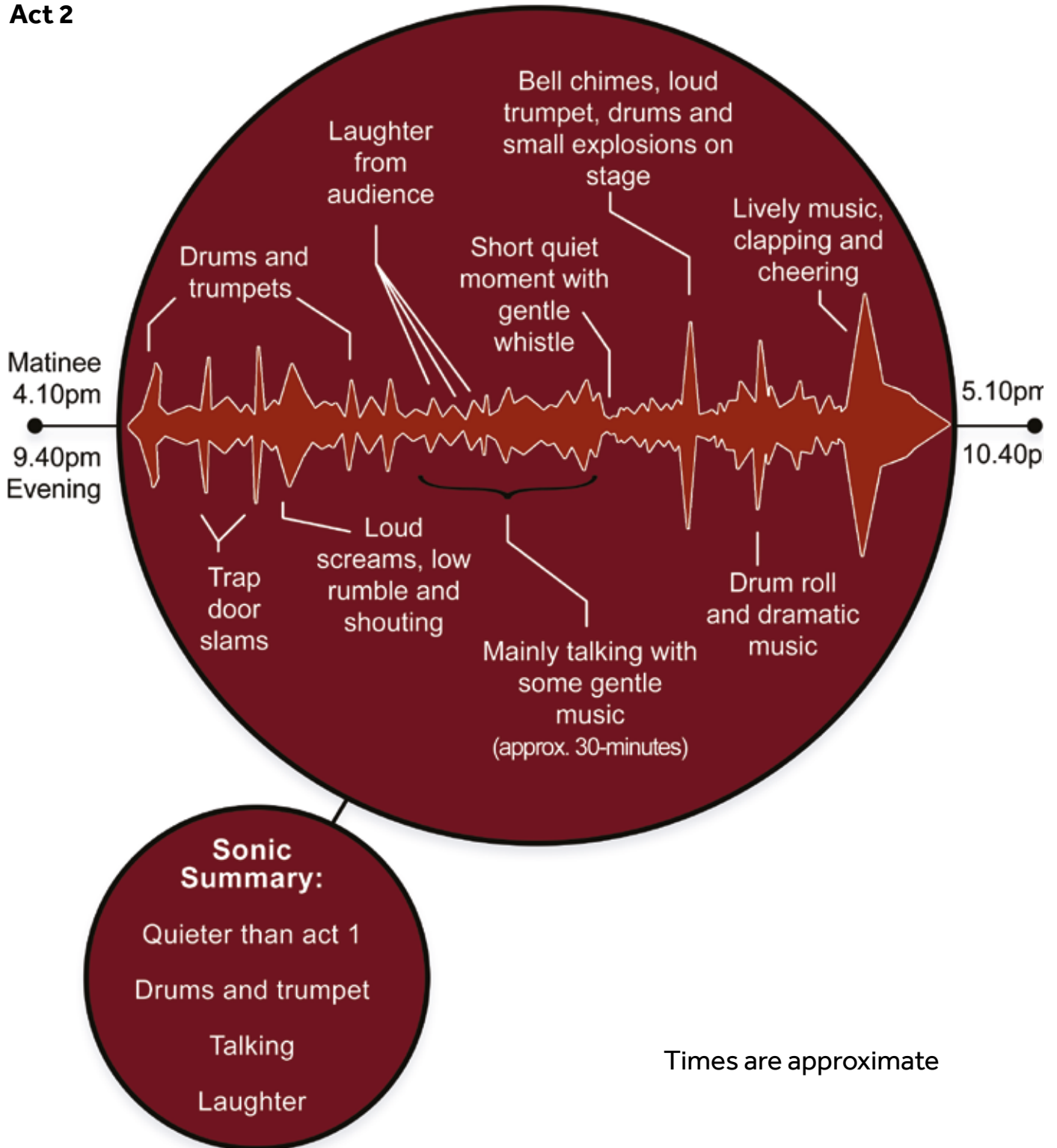
This 'Sonic Story' provides information about what to expect from the music and sounds of King Lear.

It shows the volume changes throughout the performance and highlights loud and quiet moments and moments when the sound changes suddenly.

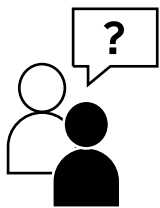
## Act 1



## Act 2



## Further information



### **Have further questions about this performance?**

Find out more about Shakespeare's Globe here:  
<https://www.shakespearesglobe.com/>



### **Getting here:**

Find directions and our Easy Read Guide to getting to Sam Wanamaker's Playhouse here:

<https://www.shakespearesglobe.com/visit/getting-here/>