

**What's on**  
**April – October**

# **FEEL ALIVE**

**SUMMER 2024**

**SHAKESPEARE'S  
GLOBE**

# About your visit.

## How to book.

### Online

**shakespearesglobe.com**

### By phone

020 7401 9919

### In person

Shakespeare's Globe, 21 New  
Globe Walk, London SE1 9DT  
(View opening hours at  
**shakespearesglobe.com/  
opening-hours**)

A £2.50 transaction fee applies  
to online and phone bookings.

Shakespeare's Globe receives  
no regular annual Government  
funding and we depend on our  
audiences to support our work  
and ambitions. Whenever you  
buy a ticket or make an extra  
donation, you are helping us to  
achieve our mission to make  
Shakespeare accessible for all.

We will be adding more events  
throughout the year, so to  
stay up to date please register  
for our email newsletter at  
**shakespearesglobe.com** or  
follow us on social media.

The **Globe Theatre** is an outdoor  
open-air theatre. The Yard  
(standing tickets) is completely  
uncovered. Seats are mostly  
covered, but please note that  
you may still get wet or be  
in direct sunlight during a  
performance. Performances  
continue whatever the weather  
so please dress accordingly.

The **Sam Wanamaker Playhouse**  
is an indoor venue with bench  
seating and limited, restricted  
view standing places.

## Our Theatres.



@The\_Globe

@ShakespearesGlobe



Registered with  
FUNDRAISING  
REGULATOR

Registered charity  
No. 266916



Playing Shakespeare  
with Deutsche Bank:

## Romeo and Juliet

Created especially  
for young people.

Our bold new 90-minute production, directed by **Lucy Cuthbertson** ('Midsummer Mechanicals'), is the perfect introduction to Shakespeare. Caught in a spiral of revenge, Romeo and Juliet connect across enemy lines. Can they break free of the bloodshed? Dedicated schools' performances also run from 29 February–27 March.

Writer **William Shakespeare**  
**Globe Theatre**  
7 March–13 April

Supported by  
Deutsche Bank



PLAYING  
SHAKESPEARE  
WITH DEUTSCHE BANK

Image by Premm Design.



## Much Ado About Nothing

There's trouble in paradise.

In a post-war Italian paradise, young lovers Claudio and Hero and sparring singletons Beatrice and Benedick are about to find out the hard way that all is not as blissful as it might seem...  
Globe Associate Artistic Director **Sean Holmes** (The Winter's Tale, 'a triumph' ★★★★★ The Telegraph) directs Shakespeare's timeless comedy.

Writer **William Shakespeare**  
**Globe Theatre**  
25 April–24 August

Image by The Other Richard.



## Richard III

**'Alack, I love myself.'**

Meet Richard: the man, the myth, the monster. Who can stop this pathological narcissist before the whole country is deceived and destroyed? Directed by **Elle While** ('A Midsummer Night's Dream', 'riveting' ★★★★★The Telegraph), with Globe Artistic Director **Michelle Terry** as Richard.

Writer **William Shakespeare**  
**Globe Theatre**  
 9 May–3 August

Image by The Other Richard.



## The Taming of the Shrew

**Cheer up, love.**

Bianca isn't allowed to marry until her older sister Katherine is wedded. But what will it take for a man to mould this fiercely independent woman into a wife? **Jude Christian** ('Titus Andronicus', 'brilliantly provocative' ★★★★★The Guardian) directs Shakespeare's cutting exploration of gender stereotypes and expectations.

Writer **William Shakespeare**  
**Globe Theatre**  
 6 June–26 October

Image by The Other Richard.





## Rough Magic

**A spooky Shakespearean summertime treat.**

Shakespeare's supernatural creations collide as the Weird Sisters from 'Macbeth' cook up an adventure of their own in this new family play. From the team behind Olivier Award-nominated, ('fantastically funny' ★★★★★ Broadway World) 'Midsummer Mechanicals' – Globe Director of Education **Lucy Cuthbertson** and Splendid Productions' **Kerry Frampton** and **Ben Hales**. Writers **Kerry Frampton** and **Ben Hales** (with substantial contributions from **William Shakespeare**).

**Sam Wanamaker Playhouse**

20 July – 24 August

A co-production with

**SPLENDID**  
PRODUCTIONS

Image by The Other Richard.



## Antony & Cleopatra

**A love that changed the world.**

When Roman general Antony falls for Egyptian queen Cleopatra, the future of their two countries hangs in the balance...

**Blanche McIntyre** ('Measure for Measure', 'exquisitely smart' ★★★★★ Time Out) directs Shakespeare's colossal story of love and duty, in a ground-breaking bilingual production using Spoken English and British Sign Language.

Writer **William Shakespeare**  
**Globe Theatre**

4 August – 15 September

Image by The Other Richard.



## The Comedy of Errors

★★★★★ 'Rip-roaring fun' (The Telegraph) returns.

Back by popular demand, our 'rib-tickling' (The Times) production of Shakespeare's hilarious tale of long-lost siblings and mistaken identities triumphantly returns to the Globe this summer. Globe Associate Artistic Director **Sean Holmes** and 2023 Globe Associate Director **Naeem Hayat** ('King Lear', 2022) return to co-direct.

Writer **William Shakespeare**  
**Globe Theatre**  
 21 August–27 October

2023 Production Image  
 by Marc Brenner.



## Princess Essex

History. It's hers for the making.

**Anne Odeke's** fast-paced, music-filled comedy, based on the incredible true story of the first woman of colour to enter a beauty contest in the UK, brings Southend-on-Sea, Essex, to the Globe this summer. **Robin Belfield** ('Twelfth Night', RSC) directs this inspiring tale of unapologetic authenticity and bravery.

Writer **Anne Odeke**  
**Globe Theatre**  
 13 September–26 October

Image by The Other Richard.



## Guided Tours

**Immerse yourself in Shakespeare's world.**

Bring 400 years of history to life on the **Shakespeare's Globe Story & Tour**, including access to our interactive exhibition and a tour of the Globe Theatre itself; join a themed **Walking Tour** of the Bankside and St Paul's areas; or dive into some of this summer's shows on a **play-specific tour**.

**On-site at the globe and surrounding areas**

Times and dates vary. Visit our website for the full schedule of tours.



## Membership

**Be part of something inspiring.**

Unlock Priority Booking for shows, exclusive backstage tours, and special Members' events and discounts. Your support will also help us to stage important and powerful shows, and further develop our vital education work.

Discover more at  
**[shakespearesglobe.com/  
join/membership](https://shakespearesglobe.com/join/membership)**  
or by calling 020 7902 5970.





## Families and Young People

### Events and workshops.

Explore Shakespeare together through **Storytellings** and **Family Workshops** for ages 5–12, **Workshops** for 12+ and 14+, and **Young Actors Short Courses** for ages 8–19.

### On-site at the globe

Visit our website for the full schedule of events.

Members' price available on Young Actors Short Courses.



## Research Events

### World-leading exploration.

Delve deeper into Shakespeare's works with insightful **Research in Action** events and **Study Days**, or explore lesser-known texts through **Read Not Dead**.

### On-site at the globe

Visit our website for the full schedule of events.

Members' price available on select events.





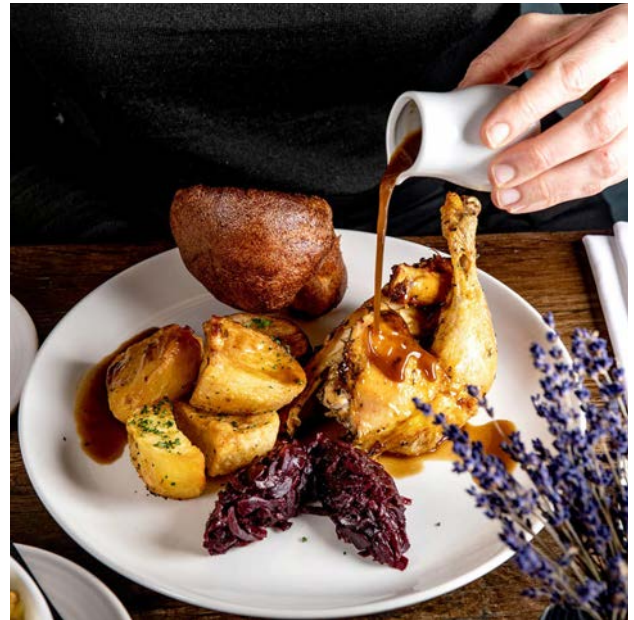
## Shop

Treat thyself at our shop.

From exclusive **Print to Order** services and **Book Box Subscriptions**, to eco-conscious gifts, our award-winning Shop is filled with unique ways to treat Shakespeare lovers.

### On-site at the Globe and online

Members' discount:  
10% off all orders  
(excluding subscription products).



## Swan Bar & Restaurant

Enjoy dining on bankside.

Savour British classics, delicious cocktails, Sunday roasts or a scrumptious afternoon tea – all while enjoying spectacular views of St Paul's Cathedral and the River Thames.

### Bankside

Open daily.  
Members' discount: 10% off.



## £5 Rush

**A new way to access  
'London's best value ticket'  
(Time Out).**

Missed out on securing tickets  
to a sold-out performance?  
Visit our website **every Friday**  
to access £5 Yard standing  
tickets for the next  
week's performances.

Find out more at  
**[shakespearesglobe.com/  
5-pound-rush](https://shakespearesglobe.com/5-pound-rush)**



## Globe Player

**Watch Shakespeare  
anywhere, any time.**

Subscribe to stream past Globe  
productions to your home.

Over 40 titles are now available at  
**[player.shakespearesglobe.com](https://player.shakespearesglobe.com)**

# The Schedule.

## March

### Thursday 7

7.00pm Playing Shakespeare  
with Deutsche Bank:  
Romeo and Juliet

### Tuesday 19

7.00pm Romeo and Juliet  
**BSL CAP**

### Thursday 28

2.00pm Romeo and Juliet

### Friday 29

7.00pm Romeo and Juliet

### Saturday 30

Romeo and Juliet Family Workshops  
and 12+ Workshops begin

2.00pm Romeo and Juliet

7.00pm Romeo and Juliet

## April

### Tuesday 2

Young Actors Short Courses  
begin (8–10 and 11–13)

2.00pm Romeo and Juliet

### Wednesday 3

2.00pm Romeo and Juliet **AD**

7.00pm Romeo and Juliet

### Thursday 4

2.00pm Romeo and Juliet

### Friday 5

2.00pm Romeo and Juliet **R**

### Saturday 6

2.00pm Romeo and Juliet **R**

7.00pm Romeo and Juliet **R**

### Tuesday 9

2.00pm Romeo and Juliet

## Wednesday 10

Easter Holidays Family Workshops  
and Storytellings begin

2.00pm Romeo and Juliet

7.00pm Romeo and Juliet

### Thursday 11

2.00pm Romeo and Juliet

### Friday 12

7.00pm Romeo and Juliet

### Saturday 13

2.00pm Romeo and Juliet

7.00pm Romeo and Juliet

### Thursday 25

7.30pm Much Ado About Nothing

### Friday 26

7.30pm Much Ado About Nothing

### Saturday 27

7.30pm Much Ado About Nothing

### Monday 29

7.30pm Much Ado About Nothing

### Tuesday 30

7.30pm Much Ado About Nothing

## May

### Wednesday 1

7.30pm Much Ado About Nothing

### Thursday 2

2.00pm Much Ado About Nothing

7.30pm Much Ado About Nothing

### Friday 3

7.30pm Much Ado About Nothing

### Saturday 4

7.30pm Much Ado About Nothing

### Thursday 9

7.30pm Richard III

### Friday 10

7.30pm Richard III



**Saturday 11**

7.30pm Much Ado About Nothing

**Sunday 12**

1.00pm Much Ado About Nothing

6.30pm Much Ado About Nothing

**Monday 13**

7.30pm Richard III

**Tuesday 14**

6.00pm Research in Action:  
Shakespeare  
and Consent

7.30pm Richard III

**Wednesday 15**

2.00pm Much Ado About Nothing

7.30pm Richard III

**Thursday 16**

2.00pm Richard III

7.00pm Read Not Dead:  
The English Moor

7.30pm Richard III

**Friday 17**

2.00pm Much Ado About Nothing

7.30pm Much Ado About Nothing

**Saturday 18**

12.00pm Study Day:  
Much Ado About Nothing

2.00pm Richard III

7.30pm Much Ado About Nothing

**Sunday 19**

1.00pm Much Ado About Nothing

6.30pm Much Ado About Nothing

**Monday 20**

7.30pm Richard III

**Tuesday 21**

2.00pm Richard III

7.30pm Richard III

**Wednesday 22**

2.00pm Much Ado About Nothing

7.30pm Much Ado About Nothing

**Thursday 23**

2.00pm Much Ado About Nothing

**AD**

7.30pm Richard III

**Friday 24**

2.00pm Richard III

7.30pm Much Ado About Nothing

**Saturday 25**

May Half Term Family Workshops,  
Storytellings, 12+ and 14+  
Workshops begin

2.00pm Much Ado About Nothing

**CAP**

7.30pm Richard III

**Sunday 26**

1.00pm Much Ado About Nothing

6.30pm Much Ado About Nothing

**Monday 27**

7.30pm Richard III **CAP**

**Tuesday 28**

Young Actors Short Courses  
begin (8–10 and 11–13)

2.00pm Richard III

7.30pm Much Ado About Nothing

**Wednesday 29**

2.00pm Much Ado About Nothing

7.30pm Much Ado About Nothing

**Thursday 30**

2.00pm Much Ado About Nothing

7.30pm Richard III

**Friday 31**

2.00pm Much Ado About Nothing

7.30pm Much Ado About Nothing

## June

### Saturday 1

2.00pm Richard III **R**

7.30pm Richard III

### Thursday 6

7.30pm The Taming of the Shrew

### Friday 7

7.30pm The Taming of the Shrew

### Saturday 8

2.00pm Richard III

7.30pm Richard III

### Sunday 9

1.00pm Much Ado About Nothing

6.30pm Much Ado About Nothing

### Monday 10

7.30pm The Taming of the Shrew

### Tuesday 11

7.30pm The Taming of the Shrew

### Wednesday 12

2.00pm The Taming of the Shrew

6.00pm Research in Action:  
Staging Mass in Early  
Modern Drama

7.30pm Much Ado About Nothing

**CAP**

### Thursday 13

2.00pm The Taming of the Shrew

7.30pm The Taming of the Shrew

### Friday 14

2.00pm Much Ado About Nothing

7.30pm Much Ado About Nothing

**BSL**

### Saturday 15

2.00pm Much Ado About Nothing

7.30pm The Taming of the Shrew

### Sunday 16

1.00pm Much Ado About Nothing

6.30pm Much Ado About Nothing

### Monday 17

7.30pm The Taming of the Shrew

### Tuesday 18

2.00pm The Taming of the Shrew

7.30pm The Taming of the Shrew

### Wednesday 19

2.00pm Much Ado About Nothing

7.30pm Richard III

### Thursday 20

2.00pm Richard III **AD**

7.30pm Much Ado About Nothing

### Friday 21

2.00pm Much Ado About Nothing

7.30pm Richard III

### Saturday 22

2.00pm Richard III **BSL**

7.30pm Much Ado About Nothing

### Sunday 23

1.00pm Much Ado About Nothing

6.30pm Much Ado About Nothing

### Monday 24

7.30pm Richard III

### Tuesday 25

2.00pm Richard III

7.30pm Much Ado About Nothing

### Wednesday 26

12.00pm Study Day:

The Taming of the Shrew

2.00pm Much Ado About Nothing

7.30pm The Taming of the Shrew

**CAP**

### Thursday 27

2.00pm The Taming of the Shrew

7.30pm Richard III

### Friday 28

2.00pm Richard III

7.30pm The Taming of the Shrew

11.59pm The Taming of the Shrew (

### Saturday 29

2.00pm Richard III

7.30pm Much Ado About Nothing

## **Sunday 30**

1.00pm Much Ado About Nothing

6.30pm Much Ado About Nothing

## **July**

### **Monday 1**

7.30pm The Taming of the Shrew

### **Tuesday 2**

2.00pm The Taming of the Shrew

7.30pm The Taming of the Shrew

### **Wednesday 3**

2.00pm The Taming of the Shrew

7.30pm Richard III

### **Thursday 4**

2.00pm Richard III

7.30pm Richard III

### **Friday 5**

2.00pm Much Ado About Nothing

7.30pm Much Ado About Nothing

### **Saturday 6**

2.00pm Richard III

7.30pm Richard III

### **Sunday 7**

1.00pm Much Ado About Nothing

6.30pm Much Ado About Nothing

### **Monday 8**

7.30pm The Taming of the Shrew

**AD**

### **Tuesday 9**

2.00pm The Taming of the Shrew

6.30pm Shakespeare's

Many Queer Lives

7.30pm The Taming of the Shrew

### **Wednesday 10**

2.00pm The Taming of the Shrew

7.30pm Richard III **R**

## **Thursday 11**

2.00pm Richard III

6.00pm Research in Action:

Marlowe in Repertory

7.30pm The Taming of the Shrew

**R**

## **Friday 12**

2.00pm The Taming of the Shrew

7.30pm Richard III

## **Saturday 13**

2.00pm Richard III

7.30pm Much Ado About Nothing

## **Sunday 14**

1.00pm Much Ado About Nothing

**BSL**

6.30pm Much Ado About Nothing

## **Monday 15**

7.30pm Richard III **CAP**

## **Tuesday 16**

2.00pm Richard III

7.30pm Much Ado About Nothing

## **Wednesday 17**

2.00pm Much Ado About Nothing

7.30pm The Taming of the Shrew

## **Thursday 18**

2.00pm The Taming of the Shrew

7.30pm The Taming of the Shrew

## **Friday 19**

2.00pm The Taming of the Shrew

7.30pm Richard III **BSL**

## **Saturday 20**

Macbeth Family Workshops begin

11.00am Rough Magic

2.00pm Richard III

3.00pm Rough Magic

7.30pm Much Ado About Nothing

## **Sunday 21**

1.00pm Much Ado About Nothing

**R**

6.30pm Much Ado About Nothing



**Monday 22**

7.30pm Richard III **AD**

**Tuesday 23**

2.00pm Richard III

3.00pm Rough Magic

7.30pm Richard III

**Wednesday 24**

1.30pm Rough Magic

2.00pm Richard III

7.30pm Much Ado About Nothing

**Thursday 25**

11.00am Rough Magic

2.00pm Much Ado About Nothing

3.00pm Rough Magic

7.30pm Much Ado About Nothing

**Friday 26**

1.30pm Rough Magic

2.00pm Much Ado About Nothing

7.30pm Richard III

**Saturday 27**

11.00am Rough Magic

2.00pm Richard III

3.00pm Rough Magic

7.30pm Much Ado About Nothing

**Sunday 28**

1.00pm Much Ado About Nothing

6.30pm Much Ado About Nothing

**Monday 29**

Young Actors Short Courses

(8–10 and 11–13) begin

**Tuesday 30**

1.30pm Rough Magic

**Wednesday 31**

11.00am Rough Magic

3.00pm Rough Magic

7.30pm Richard III

**August****Thursday 1**

1.30pm Rough Magic

7.30pm Richard III

**Friday 2**

3.00pm Rough Magic

7.30pm Richard III

**Saturday 3**

11.00am Rough Magic

12.00pm Study Day: Richard III

3.00pm Rough Magic

7.30pm Richard III

**Sunday 4**

6.30pm Antony & Cleopatra **CAP**

**Monday 5**

Young Actors Short Course

(14–16) begins

7.30pm Much Ado About Nothing

**Tuesday 6**

1.30pm Rough Magic

7.30pm Antony & Cleopatra **CAP**

**Wednesday 7**

1.30pm Rough Magic **AD**

7.30pm Antony & Cleopatra **CAP**

**Thursday 8**

11.00am Rough Magic

3.00pm Rough Magic

7.30pm Antony & Cleopatra **CAP**

**Friday 9**

2.00pm Antony & Cleopatra **CAP**

3.00pm Rough Magic **R**

7.30pm Much Ado About Nothing

**Saturday 10**

11.00am Rough Magic

2.00pm Much Ado About Nothing

**AD**

3.00pm Rough Magic **CAP**

7.30pm Much Ado About Nothing

## **Sunday 11**

1.00pm Antony & Cleopatra **CAP**

6.30pm Antony & Cleopatra **CAP**

## **Monday 12**

7.30pm Much Ado About Nothing

## **Tuesday 13**

1.30pm Rough Magic

2.00pm Much Ado About Nothing

7.30pm Antony & Cleopatra **CAP**

## **Wednesday 14**

11.00am Rough Magic

2.00pm Antony & Cleopatra **CAP**

3.00pm Rough Magic

7.30pm Antony & Cleopatra **CAP**

## **Thursday 15**

1.30pm Rough Magic **BSL**

2.00pm Much Ado About Nothing

7.30pm Much Ado About Nothing

**R**

## **Friday 16**

2.00pm Much Ado About Nothing

3.00pm Rough Magic

7.30pm Antony & Cleopatra **CAP**

## **Saturday 17**

11.00am Rough Magic

2.00pm Antony & Cleopatra **CAP**

3.00pm Rough Magic

7.30pm Much Ado About Nothing

11.59pm Much Ado About Nothing (C

## **Monday 19**

Young Actors Short Course and  
Young Academics Short Course  
(17–19) begin

## **Tuesday 20**

3.00pm Rough Magic

## **Wednesday 21**

1.30pm Rough Magic **R**

7.30pm The Comedy of Errors

## **Thursday 22**

11.00am Rough Magic

3.00pm Rough Magic

7.30pm The Comedy of Errors

## **Friday 23**

1.30pm Rough Magic

2.00pm The Comedy of Errors

7.30pm Much Ado About Nothing

## **Saturday 24**

11.00am Rough Magic

2.00pm Much Ado About Nothing

3.00pm Rough Magic

7.30pm Much Ado About Nothing

## **Sunday 25**

1.00pm Antony & Cleopatra **CAP**

6.30pm Antony & Cleopatra **CAP**

## **Monday 26**

7.30pm The Comedy of Errors

## **Tuesday 27**

2.00pm The Comedy of Errors

7.30pm Antony & Cleopatra **CAP**

## **Wednesday 28**

2.00pm The Comedy of Errors

7.30pm Antony & Cleopatra **CAP**

## **Thursday 29**

2.00pm The Comedy of Errors

7.30pm The Comedy of Errors

## **Friday 30**

2.00pm Antony & Cleopatra **CAP**

7.30pm Antony & Cleopatra **CAP**

## **Saturday 31**

2.00pm The Comedy of Errors

7.30pm The Comedy of Errors

## September

### Sunday 1

1.00pm Antony & Cleopatra **CAP**  
**R**

6.30pm Antony & Cleopatra **CAP**

### Monday 2

7.30pm The Comedy of Errors

### Tuesday 3

2.00pm The Comedy of Errors  
**R**

7.30pm Antony & Cleopatra **CAP**

### Wednesday 4

2.00pm Antony & Cleopatra **CAP**  
**AD**

7.30pm The Comedy of Errors  
**CAP**

### Thursday 5

2.00pm The Comedy of Errors  
7.30pm Antony & Cleopatra **CAP**  
**R**

### Friday 6

2.00pm Antony & Cleopatra **CAP**  
7.30pm The Comedy of Errors  
11.59pm The Comedy of Errors **C**

### Saturday 7

12.00pm Study Day:  
Antony & Cleopatra  
2.00pm Antony & Cleopatra **CAP**  
7.30pm Antony & Cleopatra **CAP**

### Tuesday 10

7.30pm Antony & Cleopatra **CAP**

### Wednesday 11

7.30pm Antony & Cleopatra **CAP**

### Thursday 12

6.00pm Research in Action:  
A Game at Chess at 400  
7.30pm Antony & Cleopatra **CAP**

### Friday 13

7.30pm Princess Essex

### Saturday 14

7.30pm Princess Essex

### Sunday 15

1.00pm Antony & Cleopatra **CAP**  
**AD**

6.30pm Antony & Cleopatra **CAP**

### Monday 16

7.30pm Princess Essex

### Tuesday 17

7.30pm Princess Essex

### Wednesday 18

2.00pm Princess Essex  
7.30pm The Comedy of Errors  
**R**

### Thursday 19

2.00pm Princess Essex  
7.30pm Princess Essex

### Friday 20

2.00pm The Comedy of Errors  
7.30pm The Comedy of Errors

### Saturday 21

2.00pm The Comedy of Errors  
**AD**  
7.30pm Princess Essex

### Sunday 22

1.00pm The Comedy of Errors  
6.30pm The Comedy of Errors

### Monday 23

7.30pm The Taming of the Shrew

### Tuesday 24

2.00pm The Taming of the Shrew  
**AD**

7.30pm The Taming of the Shrew

### Wednesday 25

2.00pm The Comedy of Errors  
7.30pm The Comedy of Errors



## **Thursday 26**

2.00pm The Taming of the Shrew  
**R**

7.30pm The Comedy of Errors

## **Friday 27**

2.00pm The Comedy of Errors  
**AD**

7.30pm Princss Essex

## **Saturday 28**

2.00pm Princess Essex **AD**

7.30pm The Comedy of Errors

## **Sunday 29**

1.00pm The Comedy of Errors

6.30pm The Comedy of Errors

## **Monday 30**

7.30pm The Taming of the Shrew

## **October**

### **Tuesday 1**

2.00pm The Taming of the Shrew

7.30pm The Taming of the Shrew

### **Wednesday 2**

2.00pm The Comedy of Errors

7.30pm The Comedy of Errors

### **Thursday 3**

2.00pm The Comedy of Errors

7.30pm Princess Essex **CAP**

### **Friday 4**

2.00pm The Taming of the Shrew

7.30pm Princess Essex **BSL**

### **Saturday 5**

2.00pm Princess Essex **R**

7.30pm The Comedy of Errors

### **Sunday 6**

1.00pm The Comedy of Errors

6.30pm The Comedy of Errors

### **Monday 7**

7.30pm The Taming of the Shrew

## **Tuesday 8**

2.00pm The Taming of the Shrew

7.30pm The Taming of the Shrew

## **Wednesday 9**

2.00pm The Taming of the Shrew

7.30pm The Comedy of Errors

## **Thursday 10**

2.00pm The Comedy of Errors

7.30pm The Comedy of Errors

## **Friday 11**

2.00pm The Comedy of Errors

7.30pm Princess Essex **BSL**

## **Saturday 12**

2.00pm The Comedy of Errors

7.30pm Princess Essex

## **Sunday 13**

1.00pm The Comedy of Errors  
**BSL**

6.30pm The Comedy of Errors

## **Monday 14**

7.30pm The Taming of the Shrew  
**BSL**

## **Tuesday 15**

2.00pm The Taming of the Shrew

7.30pm The Taming of the Shrew

## **Wednesday 16**

2.00pm The Comedy of Errors

7.30pm The Comedy of Errors  
**CAP**

## **Thursday 17**

2.00pm The Comedy of Errors

7.30pm Princess Essex **R**

## **Friday 18**

2.00pm The Taming of the Shrew  
**BSL**

7.30pm Princess Essex

## **Saturday 19**

2.00pm The Comedy of Errors

**BSL**

7.30pm Princess Essex **CAP**

## **Sunday 20**

1.00pm The Comedy of Errors

6.30pm The Comedy of Errors

## **Monday 21**

7.30pm The Taming of the Shrew

## **Tuesday 22**

2.00pm The Taming of the Shrew

7.30pm The Comedy of Errors

## **Wednesday 23**

2.00pm The Comedy of Errors

7.30pm The Comedy of Errors

## **Thursday 24**

2.00pm The Comedy of Errors

7.30pm Princess Essex

## **Friday 25**

2.00pm The Comedy of Errors

7.30pm The Taming of the Shrew

## **Saturday 26**

2.00pm The Taming of the Shrew

**CAP**

7.30pm Princess Essex

## **Sunday 27**

1.00pm The Comedy of Errors

☾ Midnight Matinee

All information is correct at time of printing, but may be subject to change. Prices for events and productions may vary so please check when booking. For more information about refunds and exchanges, group and school bookings, and terms and conditions, please refer to our website **[shakespearesglobe.com](https://shakespearesglobe.com)**

# Tickets.

## Globe Theatre Playing Shakespeare with Deutsche Bank: Romeo and Juliet

£65, £59, £48, £36\*, £25\*  
seated | £5/£10 Yard standing  
Half price seated tickets  
available for under-18s

## Much Ado About Nothing, Richard III, The Taming of the Shrew, Antony & Cleopatra, The Comedy of Errors, Princess Essex

£75, £69, £62, £59, £48, £39\*,  
£25\* seated | £5/£10  
Yard standing

Yard standing tickets are  
available at £5 & £10 for  
every performance in  
The Globe Theatre ♦

## Sam Wanamaker Playhouse Rough Magic £30, £15\* seated

\*Restricted view | ♦ All standing  
tickets are general admission.  
The price of the ticket does not  
affect where you can stand in the  
yard. Please see our website for  
prices of other events.

# Access.

For dates and times of assisted  
performances, please use the  
following key:

**AD** Audio Described  
(including Touch Tour)

**BSL** British Sign Language  
Interpreted

**CAP** Captioned

**R** Relaxed

Join our **Access Scheme**  
for resources, accessible  
brochures, seating and adjusted  
ticket pricing.

## Web:

[shakespearesglobe.com/access](https://shakespearesglobe.com/access)

## Email:

[access@shakespearesglobe.com](mailto:access@shakespearesglobe.com)

## Phone:

020 7902 1409

All performances of  
**Antony & Cleopatra** will  
be captioned. Our creative  
team of deaf and hearing  
artists and consultants will  
begin the creation process  
for the production in the  
spring. We will therefore  
be able to provide further  
information on the creative  
integration of both British  
Sign Language and Spoken  
English in due course. Further  
details will be announced soon  
and updated on our website.