

A Visual Story
To support your visit to Shakespeare's Globe.

**SHAKESPEARE'S
GLOBE**

THE CRUCIBLE

By Arthur Miller



Contents



Visual Story

This document will give you a detailed description of what to expect from The Crucible at Shakespeare's Globe.

Included:

- Pictures of the cast in and out of costume
- Show notes and helpful information
- Synopsis
- A sonic story provided by TourettesHero
- Contact details

The Cast

This shows the cast in and out of character. Some of the characters appear in multiple costumes throughout.



Sarah Belcher



Anna Putnam /
Sarah Good



Sarah Cullum



Martha Corey / Ruth
Putnam / Cover



Gavin Drea



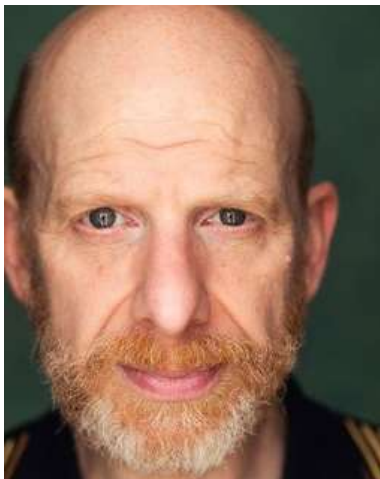
John Proctor



Joshua Dunn



Cheever



Steve Furst



Reverend Parris



James Groom



Willard / Cover



Joanne Howarth



Rebecca Nurse



Molly Madigan



Mercy Lewis / Cover



Aisha-Mae McCormick



Susanna Walcott / Cover



Stuart McQuarrie



Thomas Putnam /
Judge Hathorne



Sarah Merrifield



Tituba



Scarlett Nunes



Betty Parris



Glyn Pritchard



Francis Nurse



Phoebe Pryce



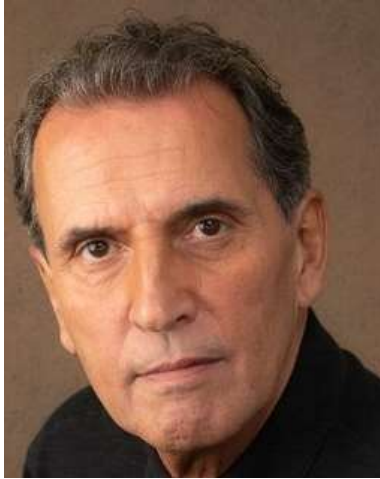
Elizabeth Proctor



Hannah Saxby



Abigail Williams



Gareth Snook



Deputy Governor
Danforth



Jo Stone-Fewings



Reverend Hale



Howard Ward



Giles Corey



Bethany Wooding



Mary Warren

Show Notes



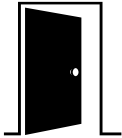
Relaxed Performance

A relaxed performance will take place on:

Tuesday 10 June 2025 at 2.00 pm

and

Saturday 28 June 2025 at 2.00 pm



This will mean:



- An open-door policy: you can come and go as much as you want or need to.
- A culture of acceptance and respect for however you want to experience the show.
- Movement and noise are welcome should you need or want to.
- Pre-show information packs are available online and at the welcome desk.

The content of the show is exactly the same.



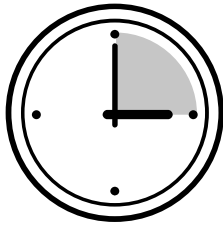
Content and Trigger Warnings

The production contains:

- Physical violence
- Weapons
- Stage blood
- Gore
- Themes of racism
- References to hanging
- References to child loss

For more details on where these occur in the performance you can follow the synopsis and sonic story.

Show Notes



Times

The show is roughly 2 hours and 50 minutes long.

This includes a 20 minute interval.



Music and Sound

The sonic story gives details on the music and sound throughout the show.

You are welcome to wear your own audio mufflers or borrow some from us.

Lighting

Shakespeare's Globe Theatre is an open-air theatre. During the daytime the theatre is lit by daylight.

The lighting therefore remains the same throughout the whole show.

Set

You can see many of the costumes used throughout the performance in the pictures throughout the synopsis.

The set looks like this:



If you don't want to know the plot of the show, you can skip to page 16.

The Crucible - Synopsis

Throughout the play, actors may move around the yard and go onto the platforms on either side of the stage. They won't bother you in the audience, they will only interact with the other actors.

Some of the actors have 'bruises' on their bodies at the start and later on in the show. These are created using make-up.

The actors come on stage and walk around before the show starts. At some points a gun is brandished, but it is never fired and never makes a noise.

In the opening scene, Reverend Parris prays over his daughter Betty, who won't wake. The town begins whispering about witchcraft. Abigail, his niece, tries to cover up what happened in the woods.



The Crucible - Synopsis

The girls panic and start blaming others to avoid punishment. Reverend Hale arrives to investigate, and Tituba, the Reverend's slave, is forced to confess to witchcraft. Soon after, Abigail and Betty join in, accusing many people in a frenzy.

Eight days later at Proctor's house, John and Elizabeth Proctor argue about Abigail (with whom he had previously had an affair) and the growing number of arrests. Mary Warren returns with news that Elizabeth is being accused.

Officials arrive and arrest Elizabeth based on a planted 'poppet' (a doll). Proctor vows to fight the court. They reveal that many other local women have also been arrested, including Giles Corey's wife.

Proctor secretly meets Abigail in the woods. Abigail loves John Proctor and accused Elizabeth because she wanted to be with him instead. She still wants to be with him, but he firmly refuses her and demands she stop the lies in court.



The Crucible - Synopsis

In the courthouse, Giles Corey and Francis Nurse try to present evidence. Proctor brings Mary Warren, his housekeeper, who admits the other girls are pretending. However, Abigail leads the other girls in a performance that makes Mary break down and accuse Proctor instead.

Proctor confesses to his affair with Abigail, but Elizabeth denies it to protect him, and the court turns against him.

Three months later in jail, Reverend Hale pleads for the prisoners' lives. Proctor is offered a chance to confess to save himself. He nearly does, but when asked to sign a public confession, he refuses to give up his name and honour. A scent is released into the audience in the final scene; it is completely harmless.

He is led to execution as Elizabeth says he has found his goodness.

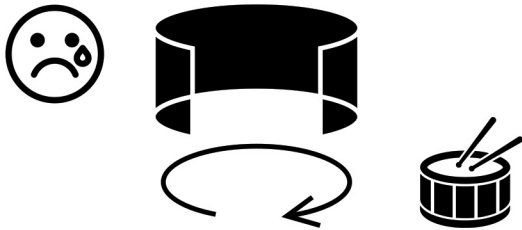


THE CRUCIBLE

Here is some information about the **music** and **sounds** in The Crucible.



There is **loud music** throughout the performance. Some of the loudest instruments are **drums, trumpets** and **bells**.



For about **15 minutes before the show begins**, characters join the stage and walk around the theatre. They **talk, cry** and **play instruments** - sometimes **very loudly**.



Sometimes there is a **gun** on stage, but it is **never fired**.



Characters often **fight, scream** and **shout**. This can be very loud.



The next two pages show the 'Sonic Story' of The Crucible. This highlights loud and quiet moments from the performance, and moments where the sound changes suddenly.

THE CRUCIBLE

Sonic Story - Act 1

Very loud ●

Loud ●

Quiet ●

Start of show:
cymbal crash,

dramatic
brass and
drums,
bell tolls.

Screaming,
low drums.

Eerie screeching
sound, **shouting,**
chaotic music and
clanging - then
distant **crying**
and **singing.**

John
shouts,
brief
drums.

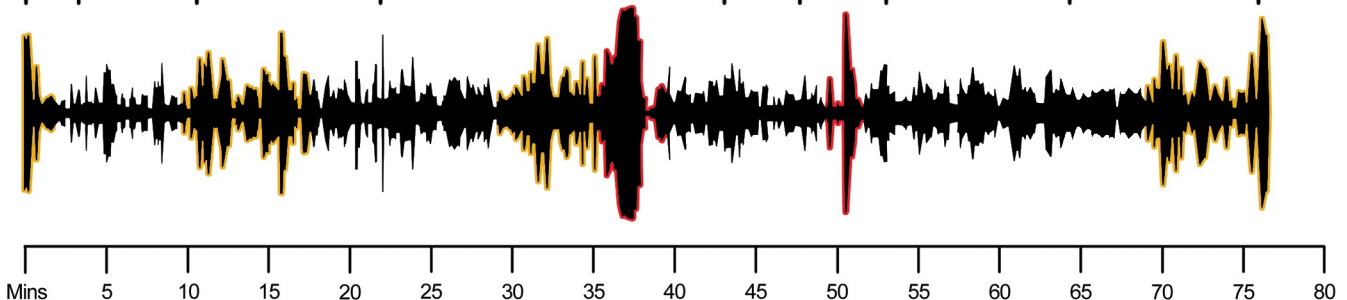
Bells toll, distant singing,
shouting and **screaming**
- then cymbals, brass
and **drums** as **Act 1 ends**
and **audience applaud.**

Knocking
at the
door.

Bell tolls,
low drums.

John
shouts.

Brief
harmonica.



Eerie
screeching
sound.

Doorbell
rings,
distant
singing,
arguing,
screaming.

Shouting,
bell tolling,
steady
drums,
screaming.

Bell tolls,
then John
slams a
chair on
the floor.

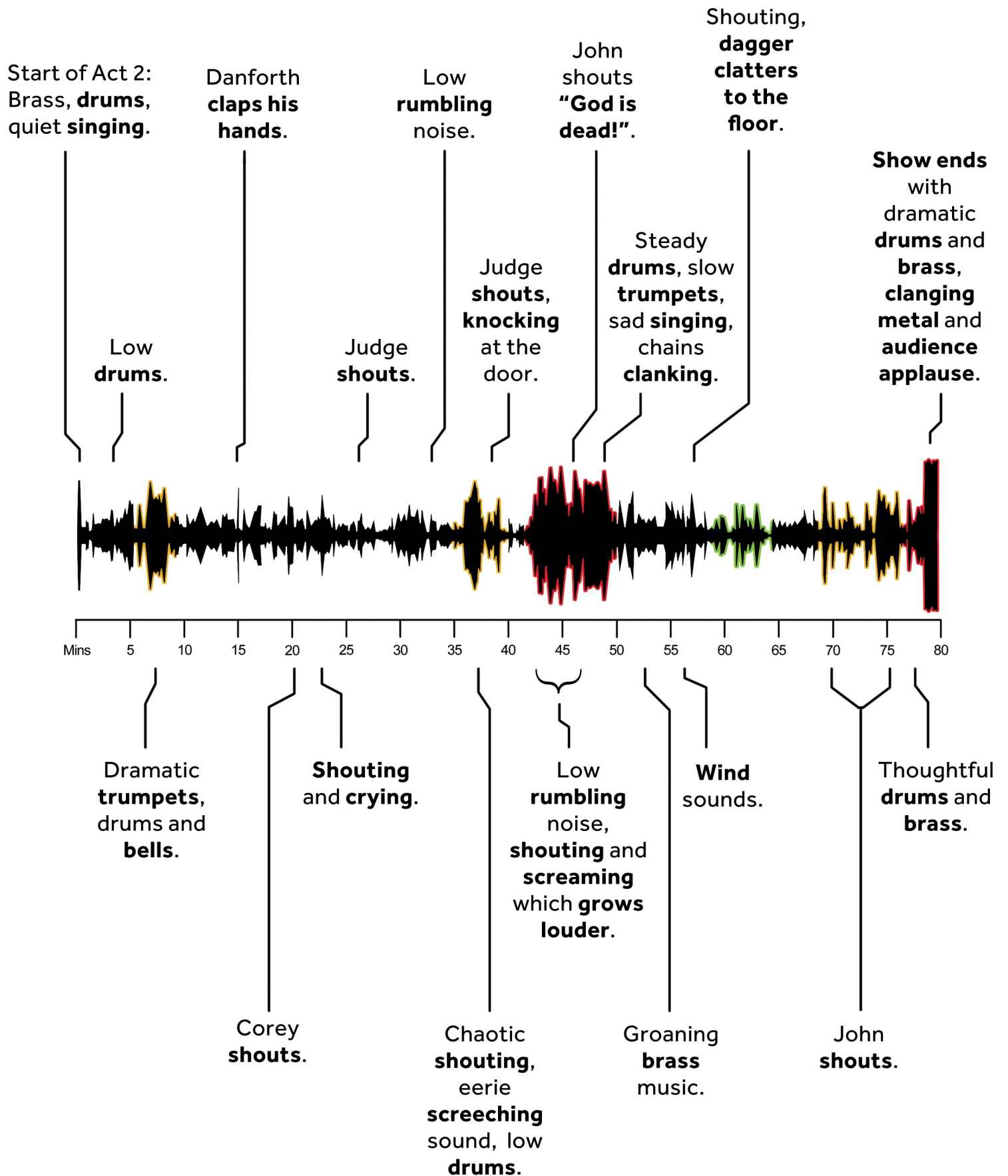
Shouting,
John pulls a
gun but
doesn't fire
it, distant
drums.

Eerie
screeching
sound, **door**
slams.

Low
rumbling
noise.

Low
rumbling
noise.

Act 2



Further information



Contact Details

Should you require more information or wish to discuss your access requirements please contact the Access team on access@shakespearesglobe.com or 020 7401 9919.



We welcome feedback about your Relaxed Performance experience at Shakespeare's Globe. Please contact us on the above details.